



US006327588B1

(12) **United States Patent**
Danish et al.

(10) **Patent No.:** **US 6,327,588 B1**
(45) **Date of Patent:** **Dec. 4, 2001**

(54) **METHOD AND SYSTEM FOR EXECUTING A GUIDED PARAMETRIC SEARCH**

(75) Inventors: **Mohamed Sherif Danish**, Mountain View; **Kris Walter Kimbrough**, Sunnyvale, both of CA (US)

(73) Assignee: **Saqqara Systems, Inc.**, San Jose, CA (US)

(*) Notice: Subject to any disclaimer, the term of this patent is extended or adjusted under 35 U.S.C. 154(b) by 0 days.

(21) Appl. No.: **09/697,761**

(22) Filed: **Oct. 27, 2000**

Related U.S. Application Data

(63) Continuation of application No. 09/384,303, filed on Aug. 26, 1999, now Pat. No. 6,275,821, which is a continuation of application No. 08/943,573, filed on Oct. 3, 1997, now Pat. No. 5,983,219, which is a continuation of application No. 08/323,186, filed on Oct. 14, 1994, now Pat. No. 5,715,444.

(51) **Int. Cl.**⁷ **G06F 17/30**

(52) **U.S. Cl.** **707/3**

(58) **Field of Search** 707/1, 2, 3, 4, 707/5

(56) **References Cited**

U.S. PATENT DOCUMENTS

4,775,935	10/1988	Yourick	345/357
4,792,849	12/1988	Mccalley et al.	348/7
4,821,211	4/1989	Torres	345/357
4,879,648	11/1989	Cochran et al.	345/353
4,905,094	2/1990	Pocock et al.	386/106
4,959,686	9/1990	Spallone et al.	340/309.15
5,065,347	11/1991	Pajak et al.	345/118
5,122,972	6/1992	Richards et al.	345/338
5,124,942	6/1992	Nielsen et al.	345/336

5,187,797	2/1993	Nielsen et al.	345/338
5,206,949	4/1993	Cochran et al.	707/4
5,208,665	5/1993	McCalley et al.	348/12
5,241,671	8/1993	Reed et al.	707/104
5,263,174	11/1993	Layman	345/353
5,297,253	3/1994	Meisel	345/357
5,319,542	6/1994	King, Jr. et al.	705/27
5,426,594	6/1995	Wright et al.	395/200.36
5,544,360	8/1996	Lewak et al.	707/1

FOREIGN PATENT DOCUMENTS

WO 94/12944 9/1994 (WO) .

OTHER PUBLICATIONS

AMP Flyer No. 65392; "Electronic Application Design Systems", 1992, AMP Incorporated, Harrisburg, PA.

User Guide: "enGenius"; Release 1.0, Sun (UNIX) UD-93-003-002, Info Enterprises, Inc., Phoenix, AZ.

AMP Booklet: "Your Introduction to EADS", #82829, 1991, AMP Incorporated, Harrisburg, PA.

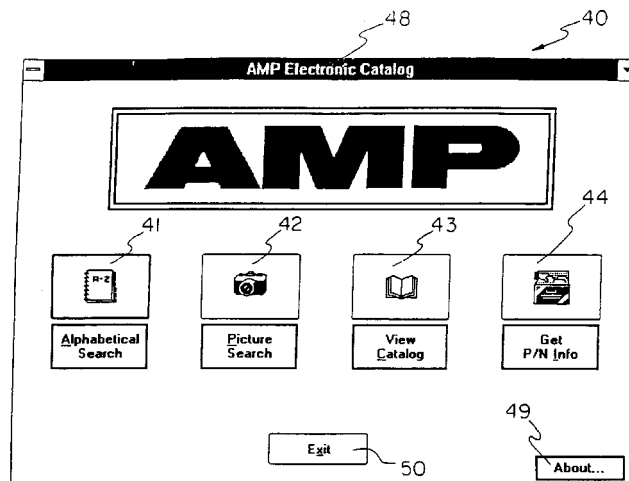
Primary Examiner—Jack M. Choules

(74) *Attorney, Agent, or Firm*—Gibson, Dunn & Crutcher LLP

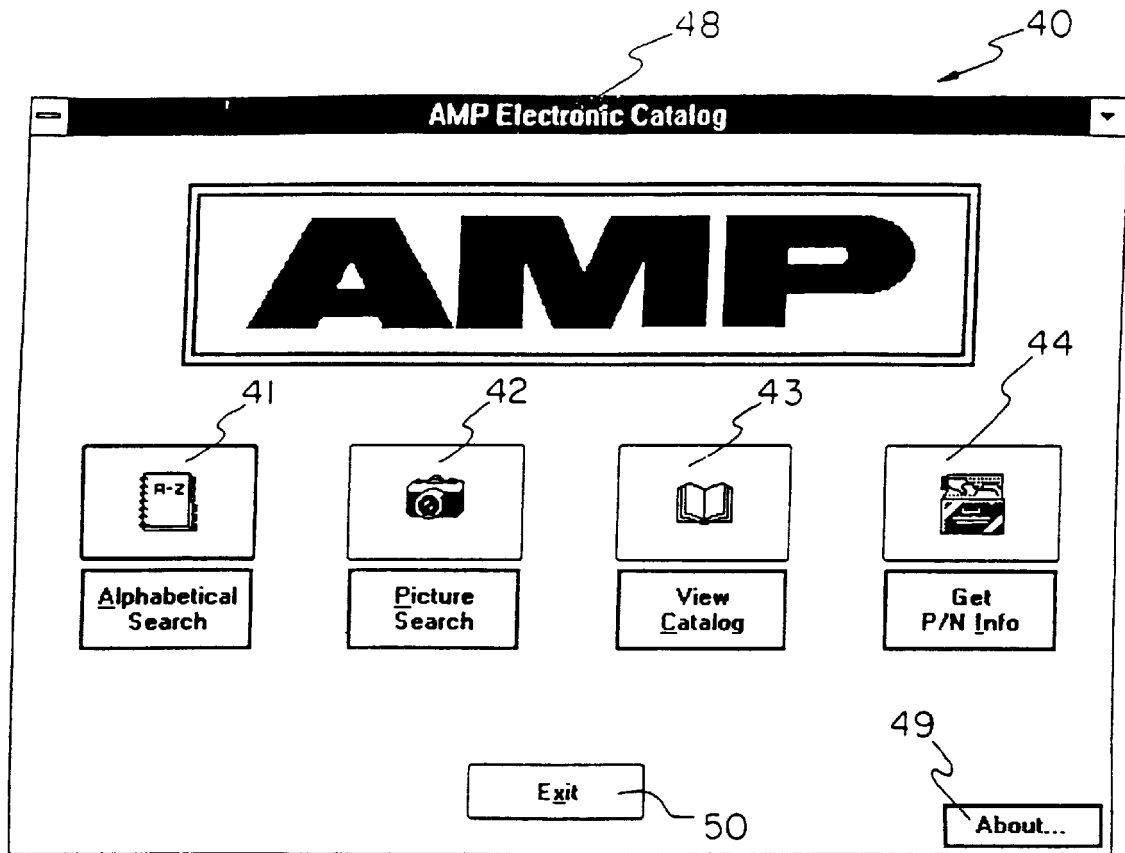
(57) **ABSTRACT**

A process for identifying a single item from a family of items presents a user with a feature screen having a series of groupings. Each grouping represents a feature having a set of alternatives from which to select. Selected alternatives are used as a selection criteria in a search operation. Results of the search operation is a revised feature screen indicating alternatives that remain available to the user for further selection and searching. The feature screen and search process, therefore, presents the user with a guided nonhierarchical parametric search to identify matching items based upon user specified criteria and priorities. Also disclosed is an adaptation of the claimed method and system appropriate in an Internet environment.

8 Claims, 30 Drawing Sheets

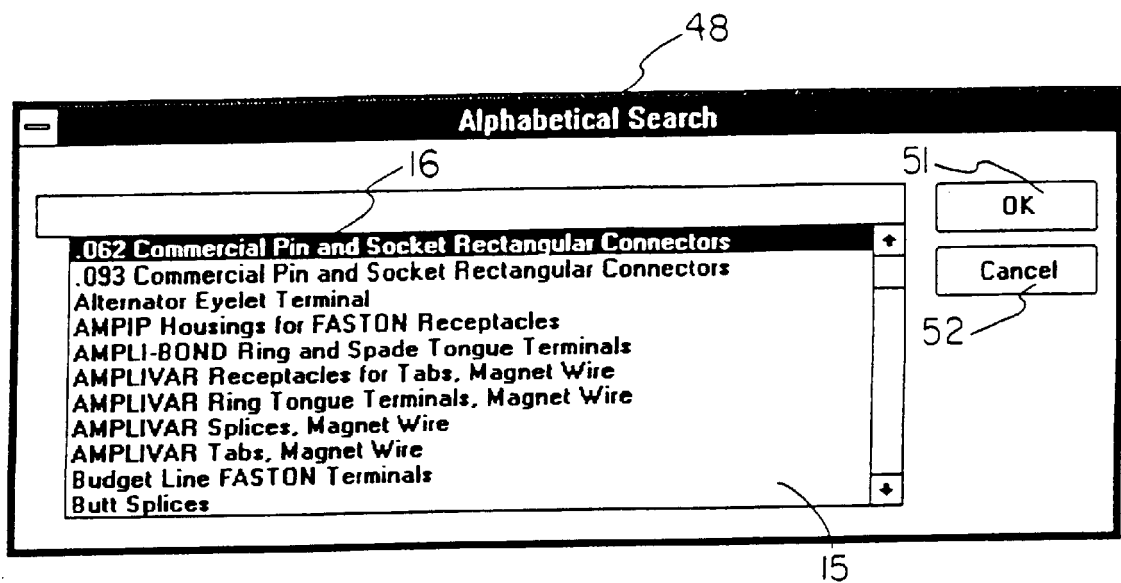


MAIN MENU



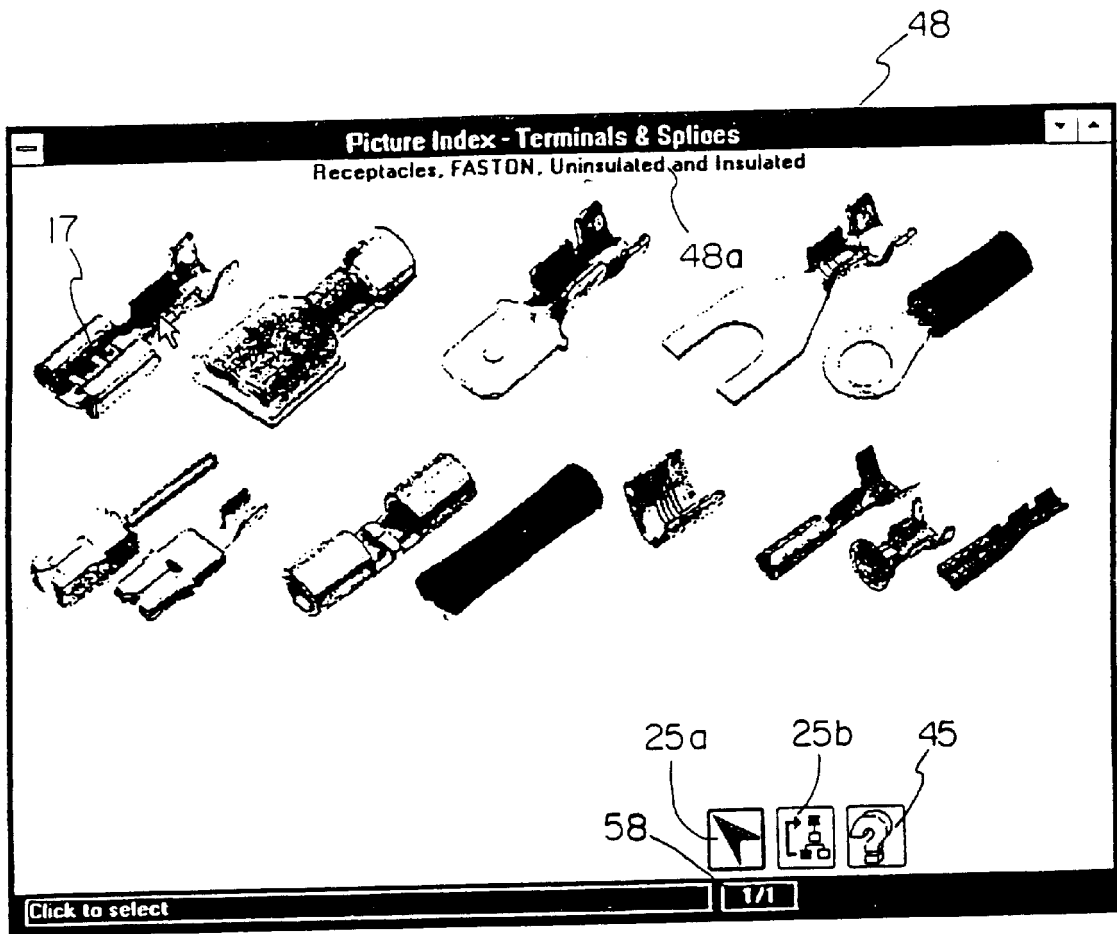
MAIN MENU

Fig. 1



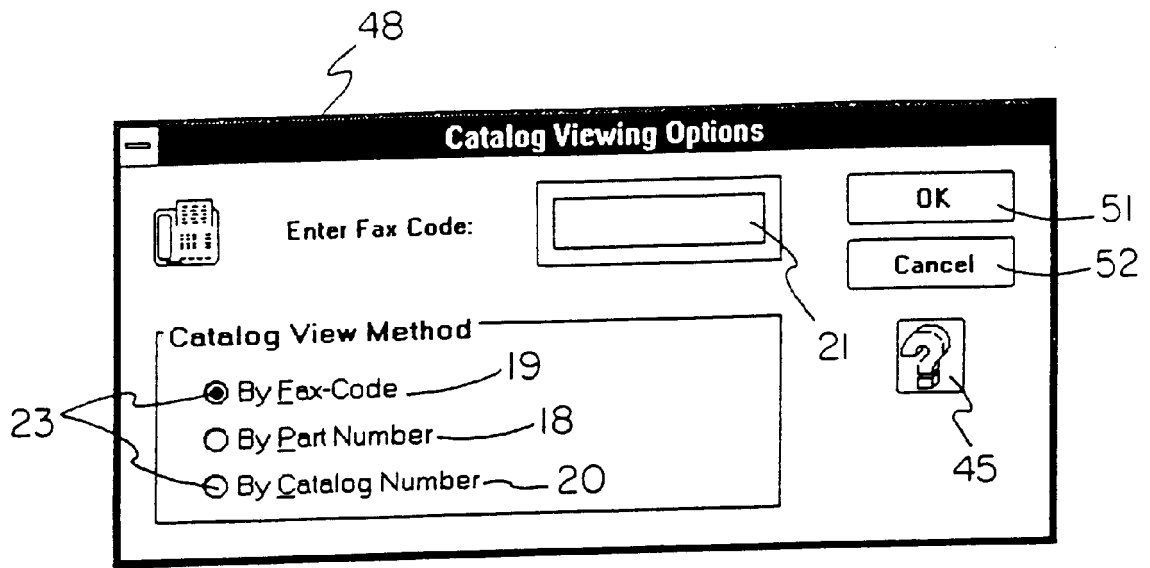
ALPHABETICAL SEARCH

Fig. 2



PICTURE SEARCH AND
SECOND LEVEL PICTURE SEARCH

Fig. 3



VIEW CATALOG PAGE

Fig. 4

48

FASTON Terminals (Insulated and Uninsulated)


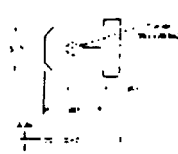
File View Zoom Page

53 54 55 **AMP**

2001-07-27 Printed: 7:30

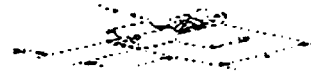
FASTON Receptacles 312 and 250 Series

210 Series Receptacles
Pneumatic Line
Insulation Support
2.311 x .029 inch dia.
Break: Whitman .010

Wire Range	Insulation Support	Terminal and Pin	Part No.	Part No.
14-18	AMP 170	AMP 170	AMP 170	AMP 170
19-22	AMP 170	AMP 170	AMP 170	AMP 170
23-27	AMP 170	AMP 170	AMP 170	AMP 170

220 Series Receptacles
Pneumatic Line
Insulation Support
1.250 x .029 inch dia.

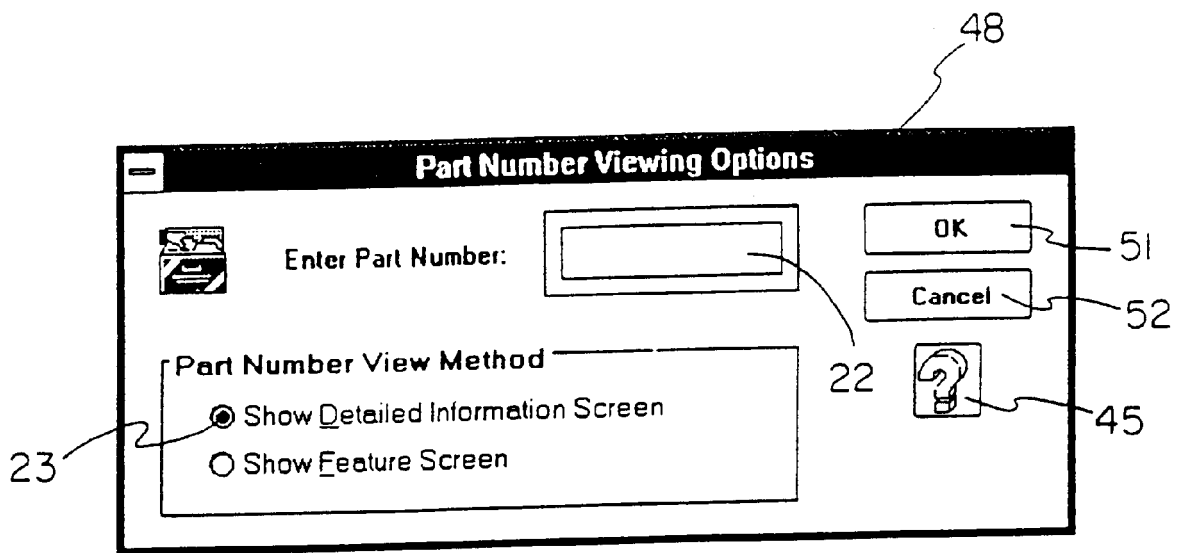


Wire Range	Insulation Support	Terminal and Pin	Part No.	Part No.
14-18	AMP 170	AMP 170	AMP 170	AMP 170
19-22	AMP 170	AMP 170	AMP 170	AMP 170
23-27	AMP 170	AMP 170	AMP 170	AMP 170

Catalog: 82004 Rev: 07/90 Page 10 P/N: 41772

CATALOG PAGE

Fig. 5



VIEW PART NUMBER INFORMATION

Fig. 6

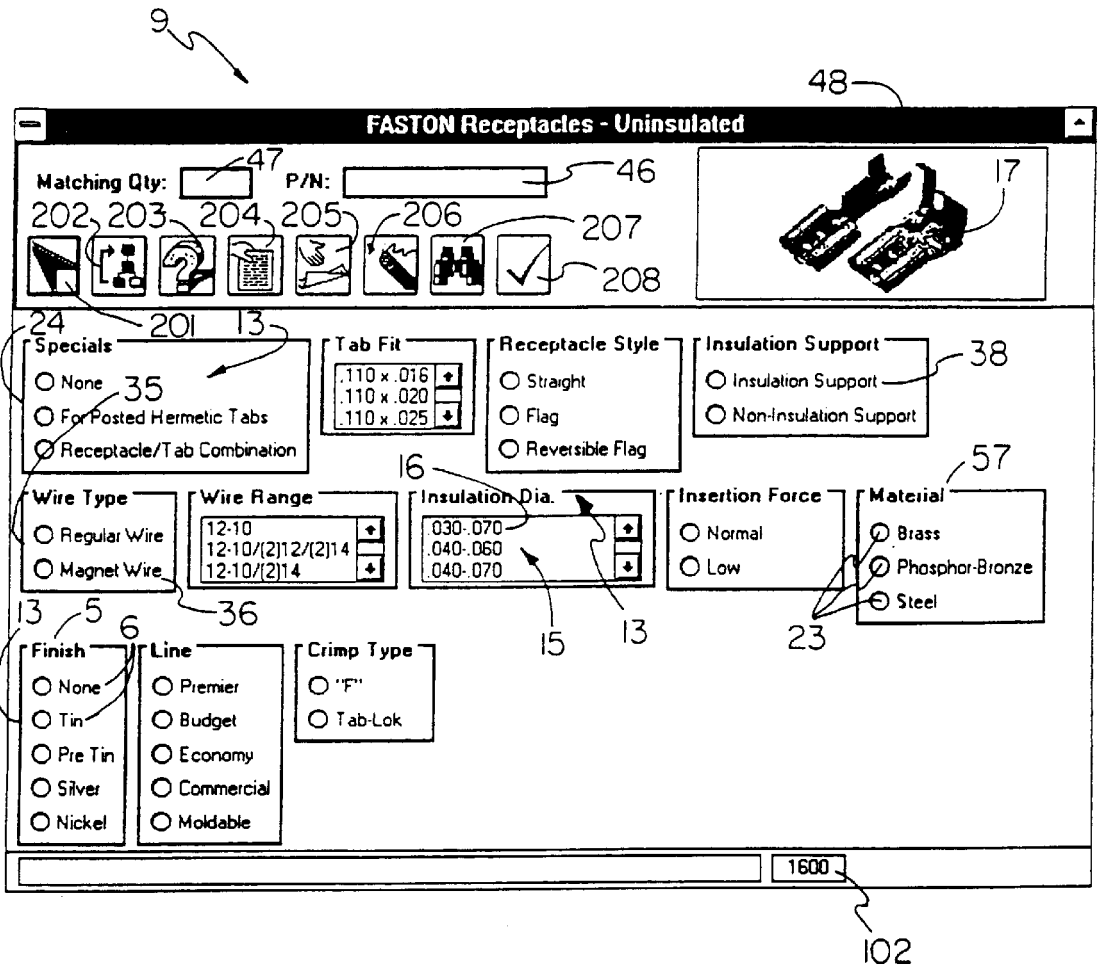


Fig. 7

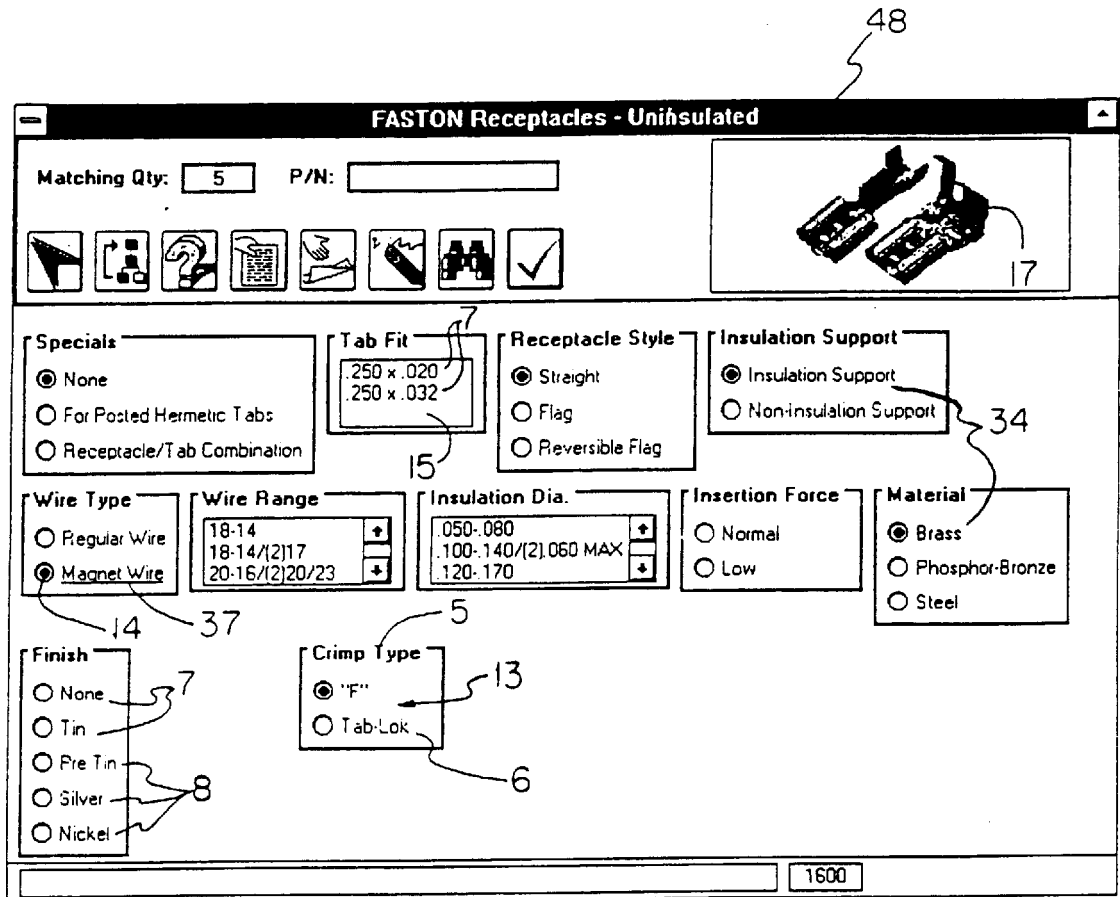



Fig. 8

FASTON Receptacles - Uninsulated

Matching Qty: P/N:

209

3



Specials

None
 For Posted Hermetic Tabs
 Receptacle/Tab Combination

Tab Fit

Receptacle Style

Straight 7
 Flag 8
 Reversible Flag

Insulation Support

Insulation Support 7
 Non-Insulation Support 8

Wire Type

Regular Wire
 Magnet Wire 14

Wire Range

37

Insulation Dia.

Insertion Force

Normal
 Low

Material

Brass
 Phosphor-Bronze
 Steel

Finish

None
 Tin 37
 Pre Tin
 Silver
 Nickel

Crimp Type

"F"
 Tab-Lok

Fig. 9

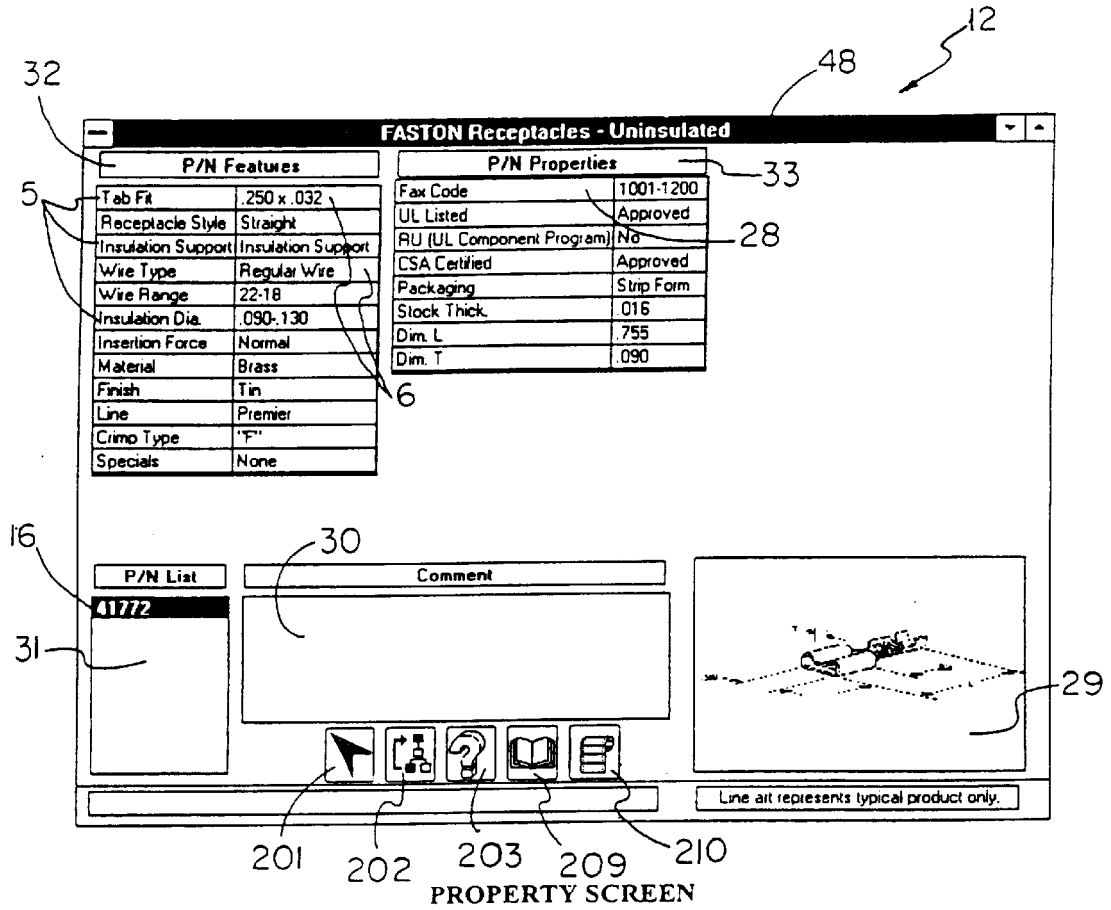


Fig. 10

60

SCREEN TYPE	SCREEN	FEA. 1	FEA. 2	FEA. 3	FEA. 4	FEA. 5	FEA. 6	FEA. 7	FEA. 8	FEA. 15
F	1600	50	38	32	31	34	40	41	42	...
P	1600	1001	1002	1003	1004	101	7	43	49	
F	1200	32	30	4	7	14	100			

601

602

603

603

Fig. 11

62

FEATURE SCREEN	GROUPING SEQUENCE	SELECTION TYPE	FEATURE
1575	1	R	57
1575	2	R	58
1575	3	L	69

621

622

623

624

Fig. 13

63

SCREEN	FEATURE	ALTERNATIVE SEQUENCE	ALTERNATIVE
1101	100	1	11
1101	100	2	7
1101	11	1	1
1101	11	2	2
1101	11	3	3

631

632

633

634

Fig. 14

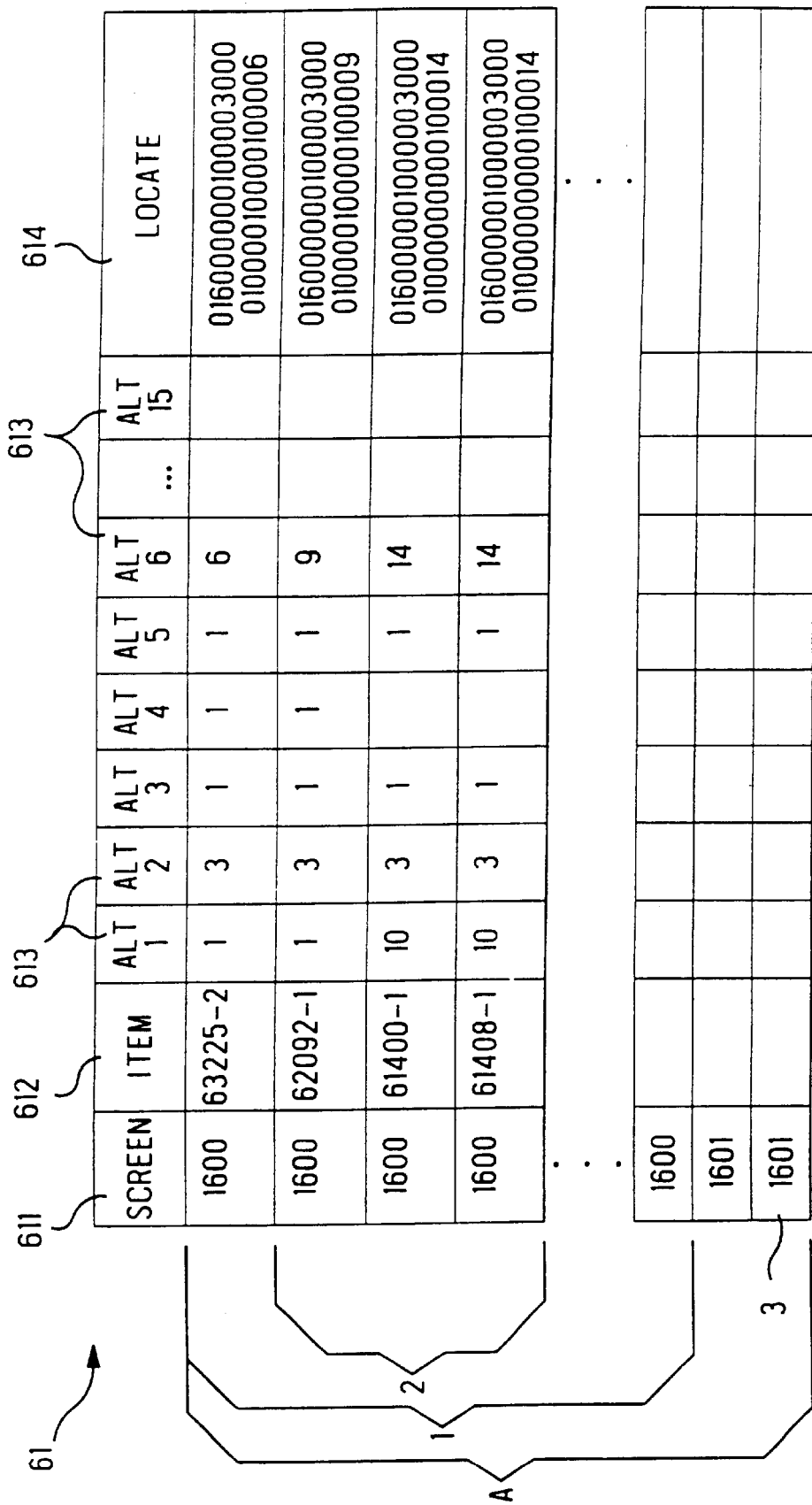


Fig. 12

641 642

FEATURE	NAME
1	Material
2	Number of Positions
43	Stock Thickness
50	Tab Fit
57	Barrel Type
68	Wire Gauge
100	Color
1002	UL Listed

← 64

Fig. 15

691 692 693

SCREEN TYPE	SCREEN	TITLE
Menu	100	FASTON Terminals
Feature	1005	FASTON Tabs
Feature	1575	FASTON Receptacles

← 69

Fig. 20

651 652 653 65

FEATURE	ALTERNATIVE	NAME
57	1	Open Barrel
57	3	Closed Barrel (PIDG)
68	18	18 AWG
100	1	Red
100	2	Blue
100	3	Green
100	4	Black
50	1	.312 x .032
50	2	.250 x .032
50	10	.110 x .020
50	11	.110 x .016
43	1	.010
43	2	.012
43	6	.016

Fig. 16

661 662

SCREEN	IMAGE FILE NAME
1101	POSLOK
1151	FASTIN
1200	AMPIP

66

Fig. 17

SCREEN	ITEM	ALT 1	ALT 2	ALT 3	ALT 4	ALT 5	ALT 6	ALT 7	ALT 8	...	ALT 15
1600	63225-2	1						6			
1600	62092-1	1						6			
1600	61400-1	25	1	2	1	3		1	315		
1600	61408-1	25	1	2	1	3		1	315		

Fig. 18

ITEM	COMMENT	IMAGE
62813-2	Left handed flag	FAST_I1D
62814-1	Right handed flag	FAST_I1D
61202-1	UL Listed and CSA Certified for 22 AWG	FAST_I3A

Fig. 19

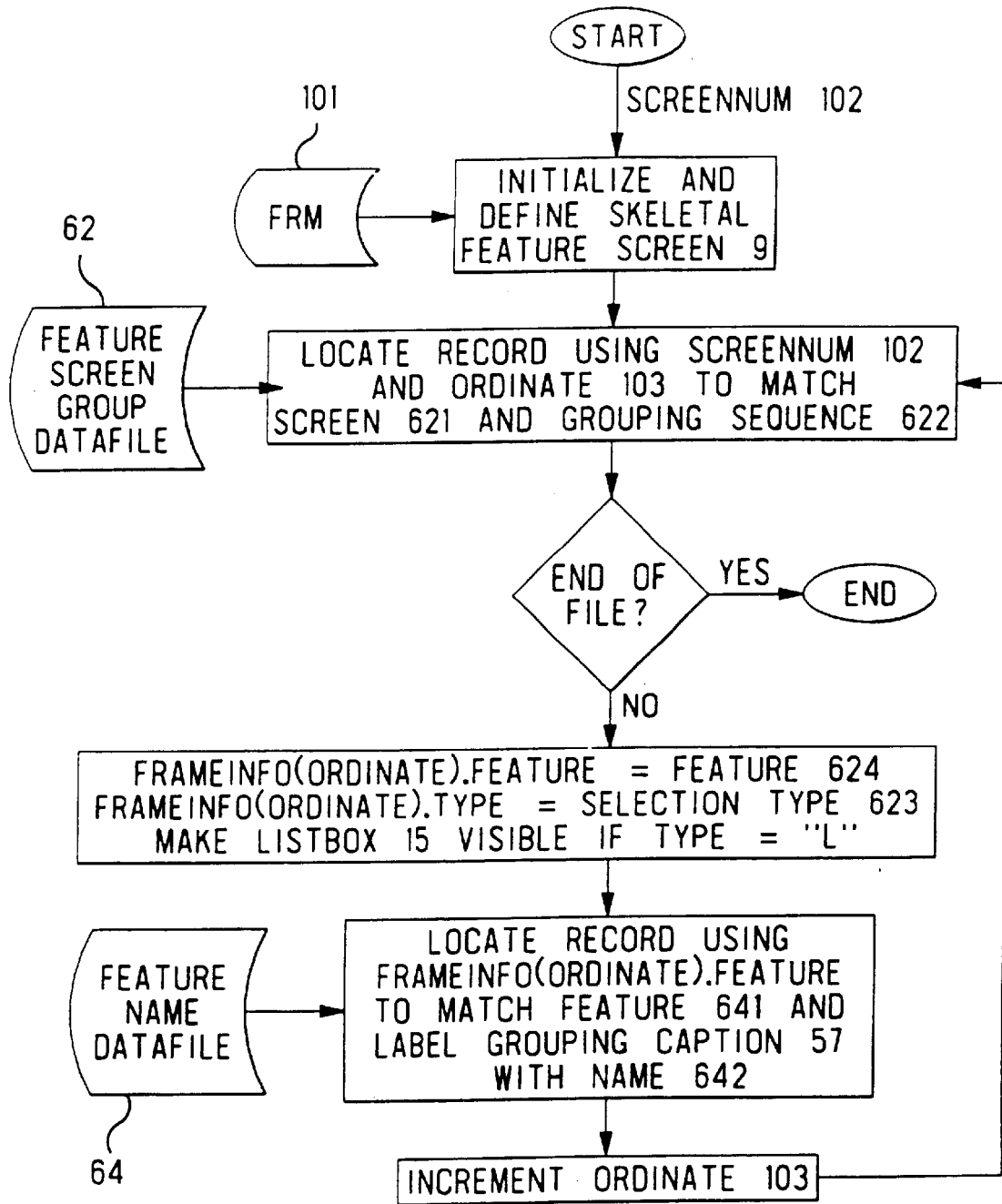


Fig. 21

Fig. 22

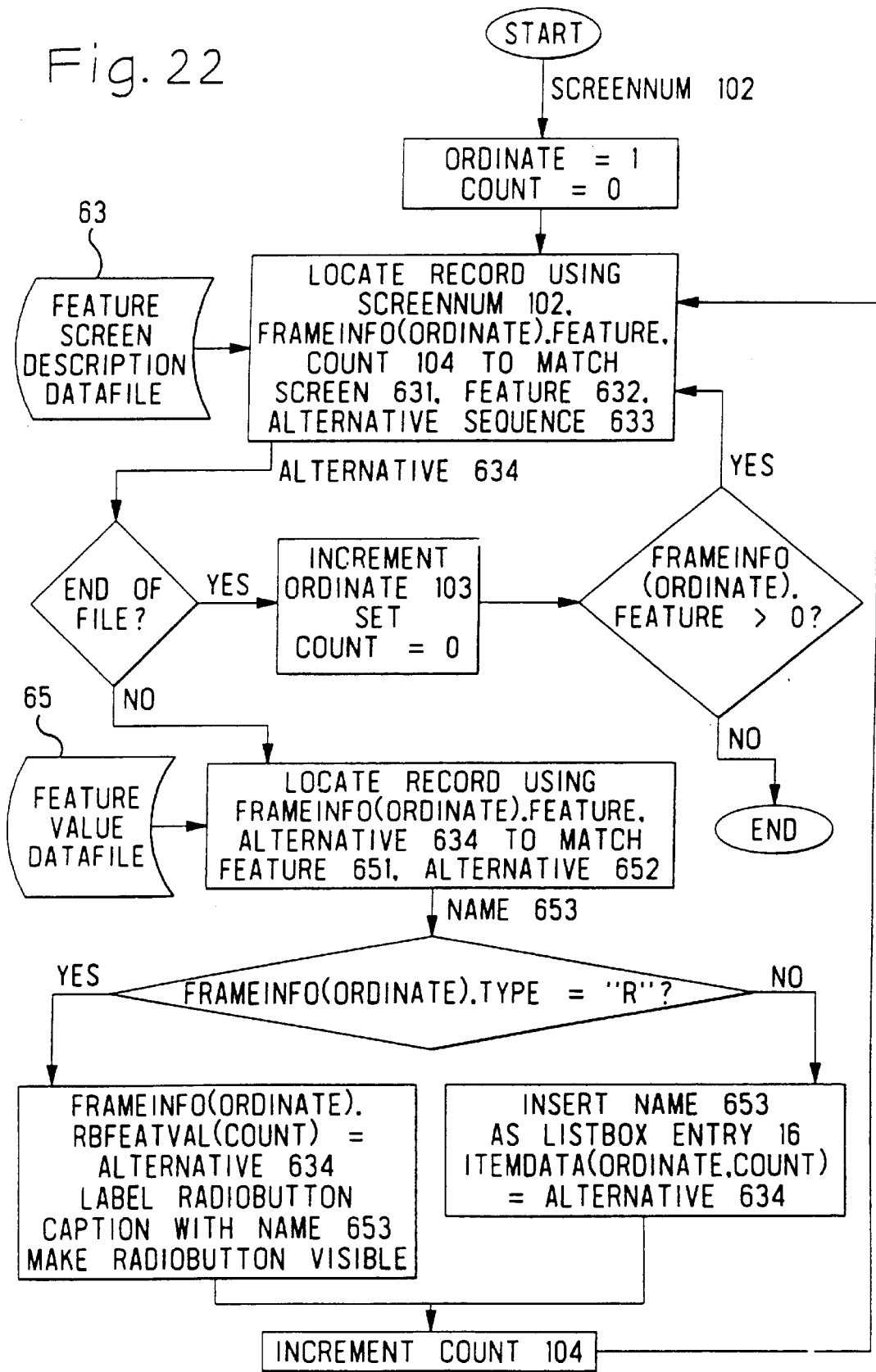
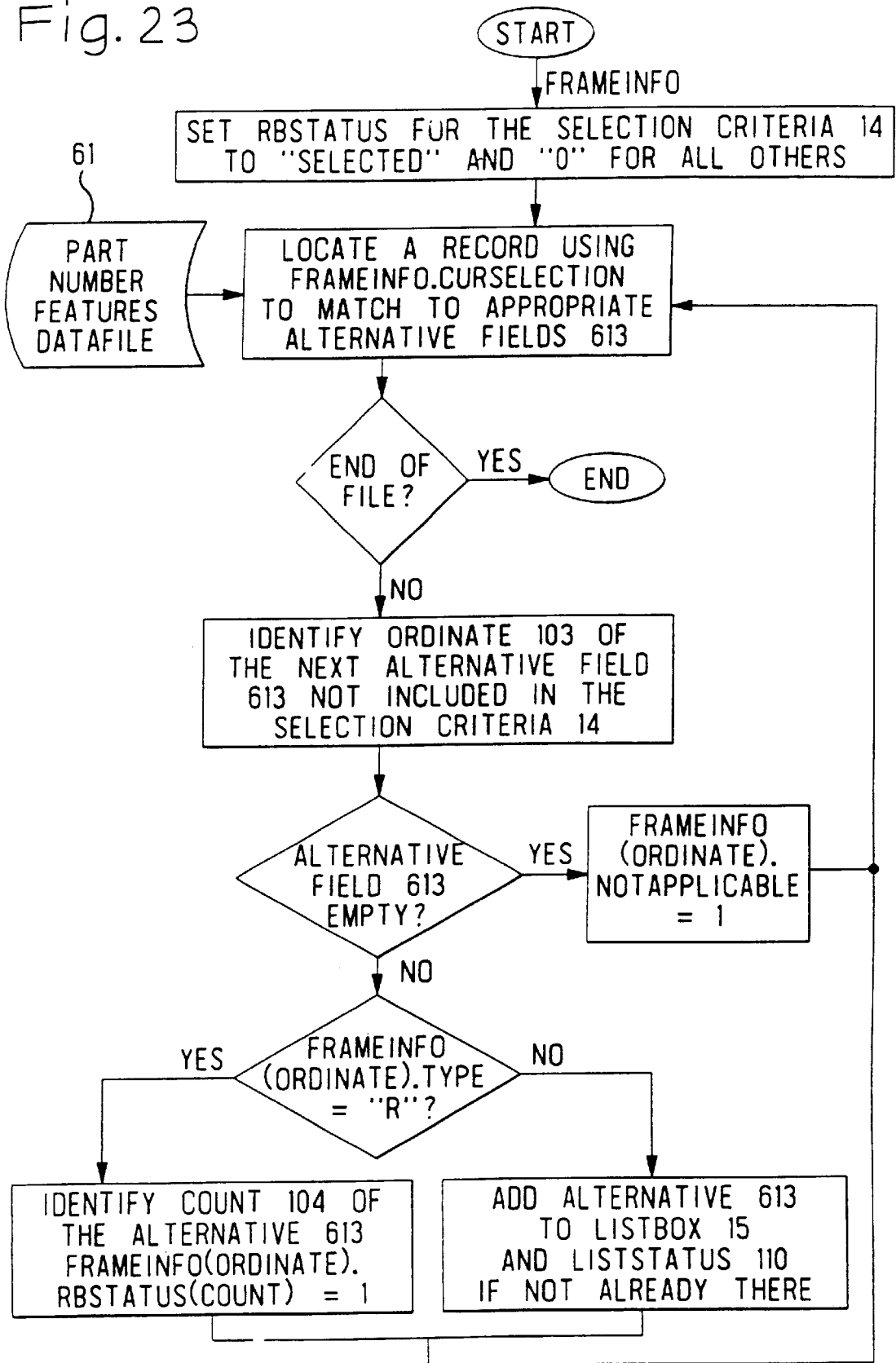


Fig. 23



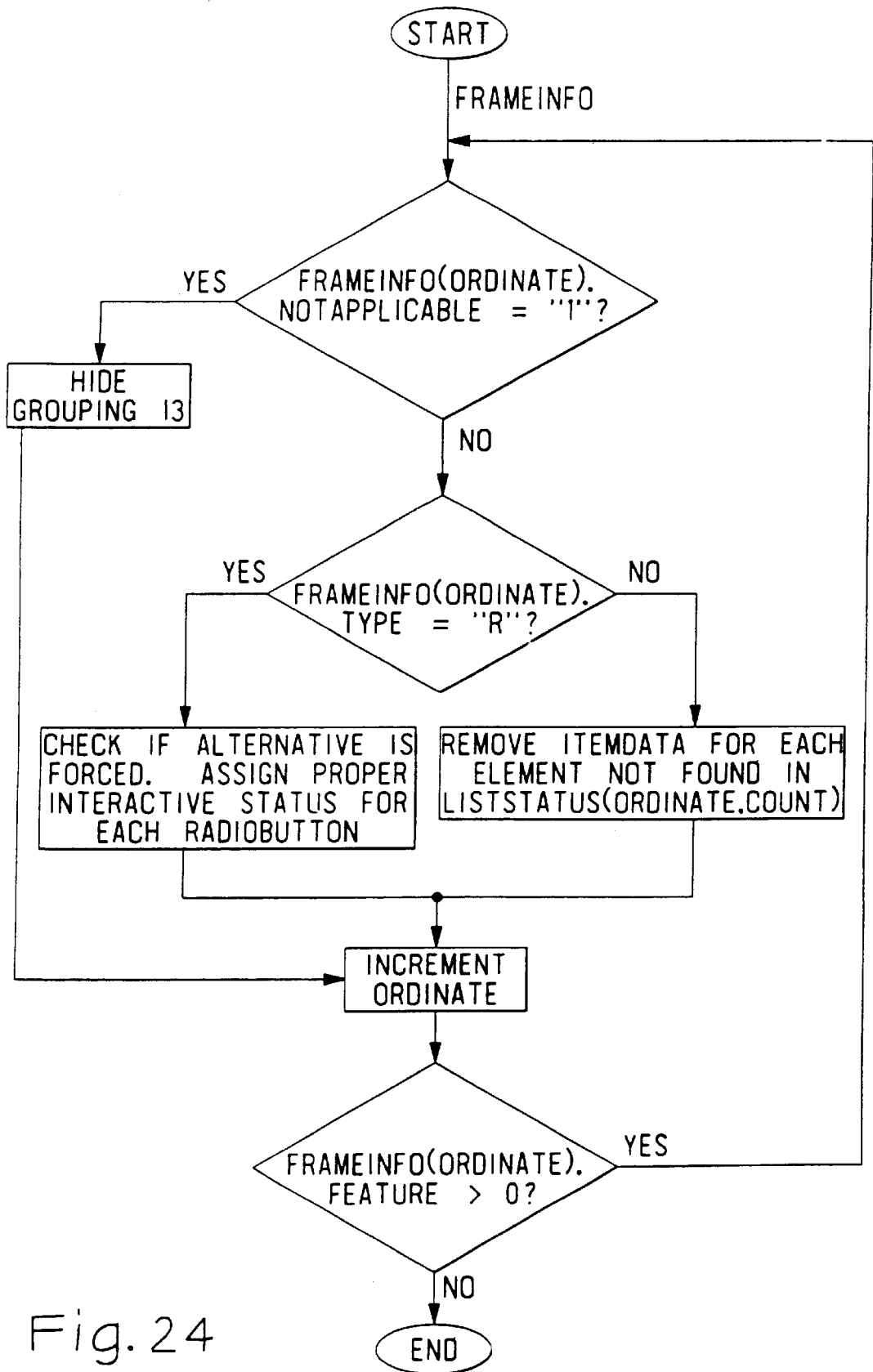


Fig. 24

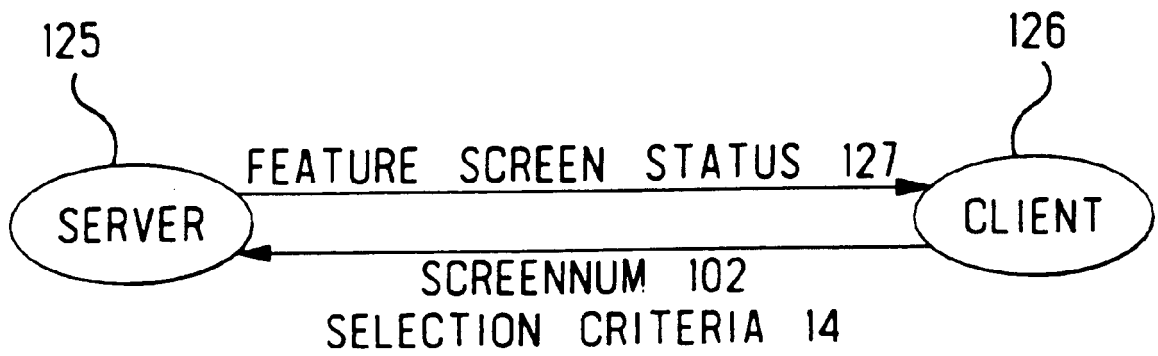


Fig. 25

9

48

FASTON Receptacles - Uninsulated

[Go to Main Menu](#) | [View Family Picture](#) 201 211

? *Specials:* [None](#) | [For Posted Hermetic Tabs](#) | [Receptacle/Tab Combination](#)

? *Tab Fit:* [.110 x .016](#) | [.110 x .020](#) | [.110 x .025](#) | [.110 x .032](#) | [.187 x .015](#) | [.187 x .017](#) | [.187 x .020](#) | [.187 x .032](#) | [.205 x .020](#) | [.205 x .032](#) | [.250 x .020](#) | [.250 x .032](#) | [.312 x .032](#)

? *Receptacle Style:* [Straight](#) | [Flag](#) | [Reversible Flag](#)

? *Insulation Support:* [Insulation Support](#) | [Non-Insulation Support](#)

? *Wire Type:* [Regular Wire](#) | [Magnet Wire](#)

? *Wire Range:* [12-10](#) | [12-10/\(2\)12/\(2\)14](#) | [12-10/\(2\)14](#) | [14-10](#) | [14-10/\(2\)14](#) | [16-12](#) | [16-12/\(2\)18](#) | [18-12](#) | [18-14](#) | [18-14/\(2\)16](#) | [18-14/\(2\)17](#) | [18-16](#) | [18-16/\(2\)18](#) | [20-14](#) | [20-16](#) | [20-16/\(2\)20](#) | [20-16/\(2\)20/23](#) | [20-18/\(2\)20](#) | [22-16](#) | [22-18](#) | [22-20](#) | [24-19](#) | [24-20](#) | [24-22](#) | [26-22](#)

? *Insertion Force:* [Normal](#) | [Low](#) 5

? *Material:* [Brass](#) | [Phosphor-Bronze](#) | [Steel](#) 6

? *Finish:* [None](#) | [Tin](#) | [Pre Tin](#) | [Silver](#) | [Nickel](#)

? *Crimp Type:* [F](#) | [Tab-Lok](#)

13

Fig. 26

201

9

FASTON Receptacles - Uninsulated 207

[Go to Main Menu](#) | [View Family Picture](#) | [Reset Selections](#) | [View Details](#)

Number of Matching P/Ns: 34 47 206

Specials: [\[None\]](#) | For Posted Hermetic Tabs | Receptacle/Tab Combination

Tab Fit: [.110 x .016](#) | [.110 x .020](#) | [.110 x .025](#) | [.110 x .032](#) | [.187 x .015](#) | [.187 x .017](#) | [.187 x .020](#) | [.187 x .032](#) | [.205 x .020](#) | [.205 x .032](#) | [.250 x .020](#) | [.250 x .032](#) | [.312 x .032](#)

Receptacle Style: [Straight](#) | [Flag](#) | Reversible Flag 37

Insulation Support: Insulation Support | [\[Non-Insulation Support\]](#)

Wire Type: [\[Regular Wire\]](#) | Magnet Wire 34

Wire Range: [12-10](#) | [12-10/\(2\)12/\(2\)14](#) | [12-10/\(2\)14](#) | [14-10](#) | [14-10/\(2\)14](#) | [16-12](#) | [16-12/\(2\)18](#) | [18-12](#) | [18-14](#) | [18-14/\(2\)16](#) | [18-14/\(2\)17](#) | [18-16](#) | [18-16/\(2\)18](#) | [20-14](#) | [20-16](#) | [20-16/\(2\)20](#) | [20-16/\(2\)20/23](#) | [20-18/\(2\)20](#) | [22-16](#) | [22-18](#) | [22-20](#) | [24-19](#) | [24-20](#) | [24-22](#) | [26-22](#)

Insertion Force: [\[Normal\]](#) | Low

Material: [Brass](#) | Phosphor-Bronze | [Steel](#)

Finish: [None](#) | [Tin](#) | [Pre Tin](#) | Silver | [Nickel](#) 8

Crimp Type: ['F'](#) | [Tab-Lok](#) 7

Fig. 27

9

FASTON Receptacles - Uninsulated

[Go to Main Menu](#) | [View Family Picture](#) | [Reset Selections](#) | [View Details](#)

Number of Matching P/Ns: 13 | 4

Specials: [None] | For Posted Hermetic Tabs | Receptacle/Tab Combination

Tab Fit: .110 x .016 | .110 x .020 | .110 x .025 | .110 x .032 | .187 x .015 | .187 x .017 | .187 x .020 | .187 x .032 | .205 x .020 | .205 x .032 | .250 x .020 | .250 x .032 | .312 x .032

Receptacle Style: Straight | Flag | Reversible Flag | 4

Insulation Support: Insulation Support | [Non-Insulation Support]

Wire Type: [Regular Wire] | Magnet Wire

Wire Range: 12-10 | 12-10/(2)12/(2)14 | 12-10/(2)14 | 14-10 | 14-10/(2)14 | 16-12 | 16-12/(2)18 | 18-12 | 18-14 | 18-14/(2)16 | 18-14/(2)17 | 18-16 | 18-16/(2)18 | 20-14 | 20-16 | 20-16/(2)20 | 20-16/(2)20/23 | 20-18/(2)20 | 22-16 | 22-18 | 22-20 | 24-19 | 24-20 | 24-22 | 26-22

Insertion Force: [Normal] | Low

Material: Brass | Phosphor-Bronze | Steel

Finish: None | Tin | Pre Tin | Silver | Nickel

Line: Premier | Budget | Economy | Commercial | Moldable

Crimp Type: "F" | Tab-Lok

8

7

Fig. 28

9

FASTON Receptacles - Uninsulated

[Go to Main Menu](#) | [View Family Picture](#) | [Reset Selections](#) | [View Details](#)

Matching P/N(s): 42845-1 — 46

Specials: [None] | For Posted Hermetic Tabs | Receptacle/Tab Combination

Tab Fit: .110 x .016 | .110 x .020 | .110 x .025 | .110 x .032 | .187 x .015 | .187 x .017 | .187 x .020 | .187 x .032 | .205 x .020 | .205 x .032 | .250 x .020 | .250 x .032 | .312 x .032

Receptacle Style: [Straight] | Flag | Reversible Flag

Insulation Support: Insulation Support | [Non-Insulation Support]

Wire Type: [Regular Wire] | Magnet Wire

Wire Range: 12-10 | 12-10/(2)12/(2)14 | 12-10/(2)14 | 14-10 | 14-10/(2)14 | 16-12 | 16-12/(2)18 | 18-12 | 18-14 | 18-14/(2)16 | 18-14/(2)17 | 18-16 | 18-16/(2)18 | 20-14 | 20-16 | 20-16/(2)20 | 20-16/(2)20/23 | 20-18/(2)20 | 22-16 | 22-18 | 22-20 | 24-19 | 24-20 | 24-22 | 26-22

Insertion Force: [Normal] | Low

Material: [Brass] | Phosphor-Bronze | Steel

Finish: [None] | Tin | Pre Tin | Silver | Nickel

Line: Premier | Budget | [Economy] | Commercial | Moldable

Crimp Type: ["F"] | Tab-Lok

Fig. 29

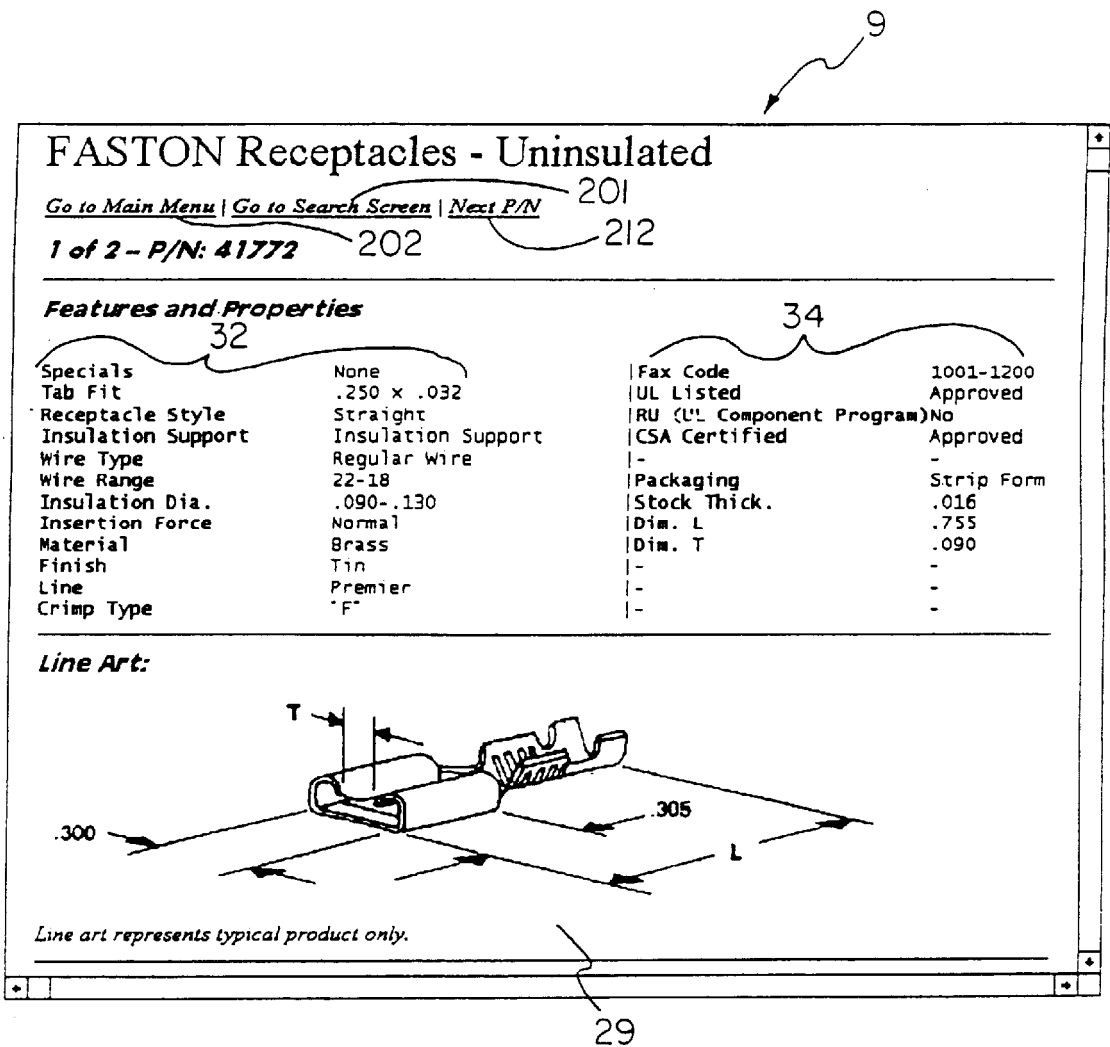


Fig. 30

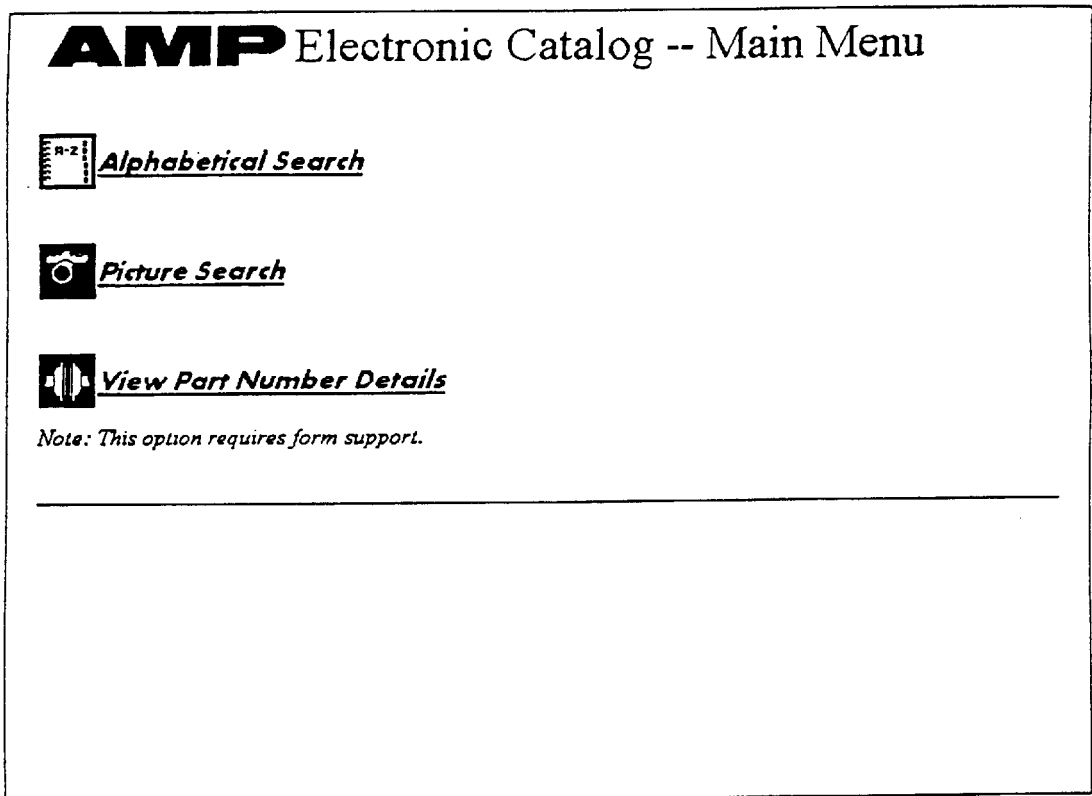


Fig. 31

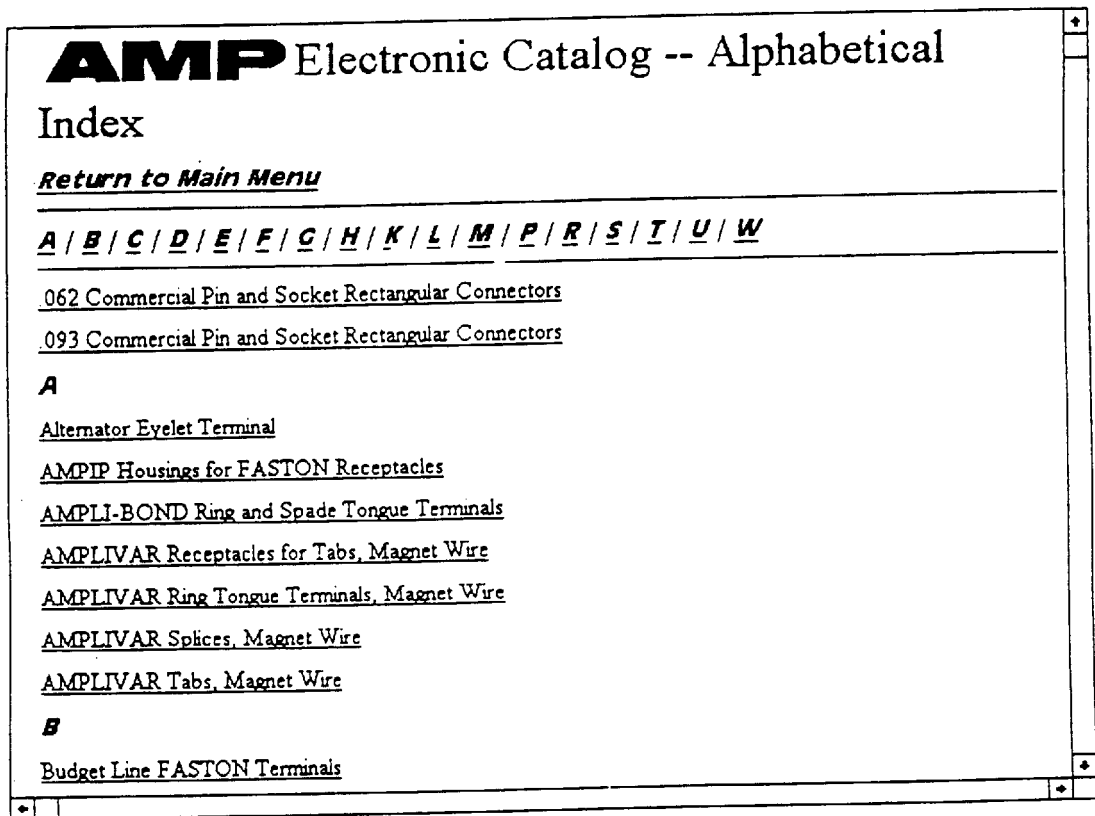


Fig. 32

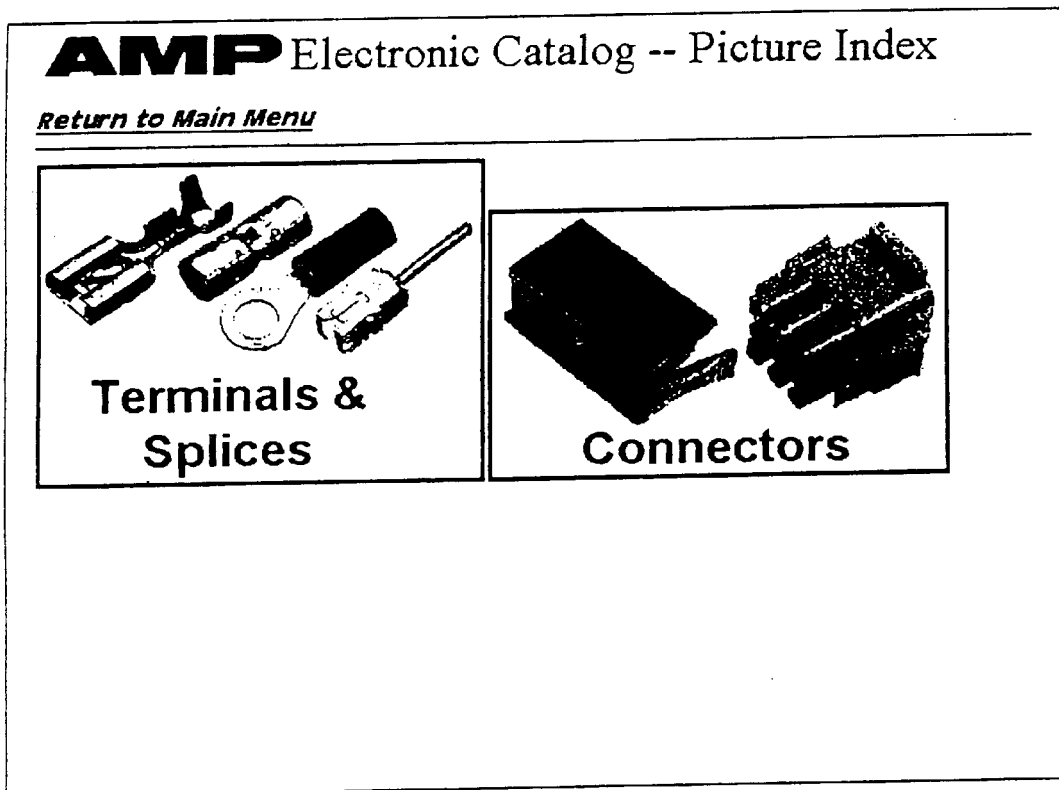


Fig. 33

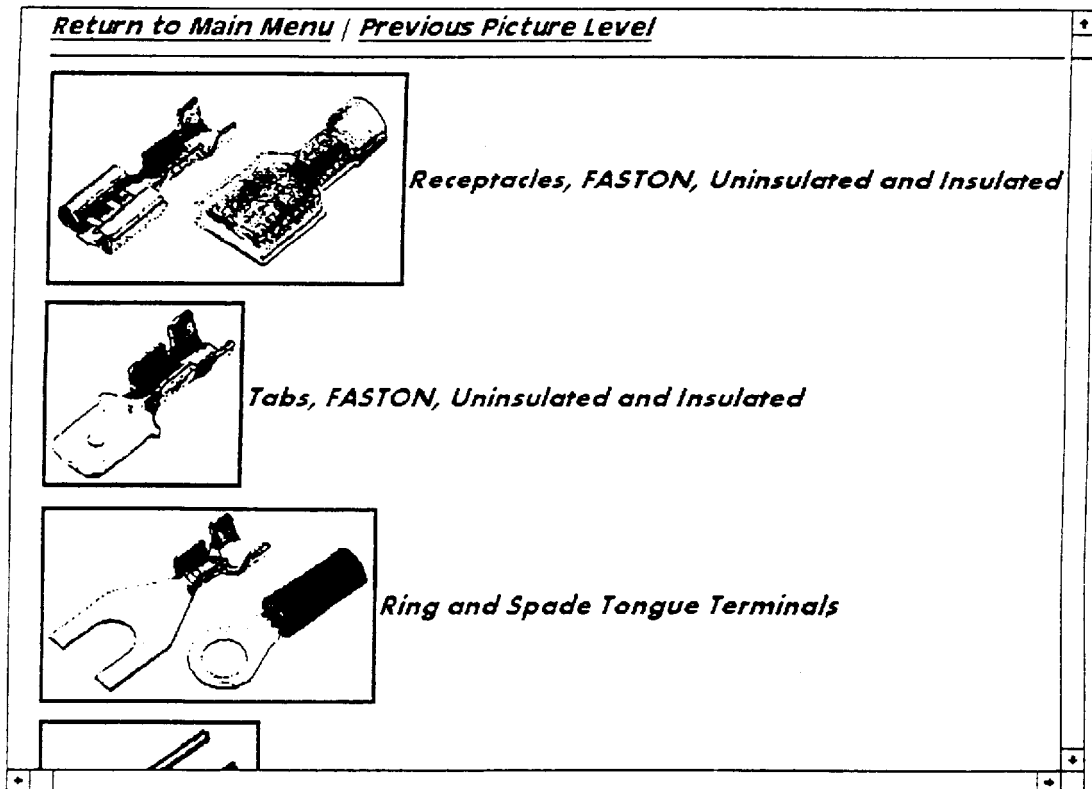


Fig. 34

AMP Electronic Catalog -- View Part Number

Return to Main Menu

In the current version you must enter an existing AMP Part Number! Future versions will be enhanced to automatically locate dash numbers from a "base only" part number.

View Detailed Information About a P/N

Enter AMP Part Number:

Press this button when complete:

Fig. 35

METHOD AND SYSTEM FOR EXECUTING A GUIDED PARAMETRIC SEARCH

CROSS REFERENCE TO RELATED APPLICATION

This application is a continuation of application Ser. No. 09/384,303, filed on Aug. 26, 1999 now U.S. Pat. No. 6,275,821, entitled "Method and System for Executing a Guided Parametric Search", which is a continuation of application Ser. No. 08/943,573, filed on Oct. 3, 1997, entitled "Method and System for Executing a Guided Parametric Search", now U.S. Pat. No. 5,983,219, which is a continuation of application Ser. No. 08/323,186, filed on Oct. 14, 1994, entitled "Method and System for Executing a Guided Parametric Search", now U.S. Pat. No. 5,715,444, all of which are incorporated herein by reference in their entirety.

FIELD OF THE INVENTION

This invention relates to navigation systems, and more particularly, to a process for identifying an item within a family of items.

BACKGROUND

Increased memory and remote electronic data storage capacity offers access to large amounts of data in a very convenient form and physical size. Data may be available on diskette, CD-ROM, magnetic tape, and on line to a centrally located computer and memory storage medium. The challenge remains to extract information from the data simply and efficiently and to have confidence in the result that all relevant items have been uncovered. The widespread use of computers and electronic searching has attracted the attention of large manufacturers offering a vast array of products in an increasingly competitive environment. In an effort to offer product that closely matches customer needs, manufacturers proliferate product and product feature alternatives. This proliferation of product offerings provides the customer with more options from which to choose, however, it also increases the difficulty of finding the one product offering that best addresses a specific customer's needs. Manufacturer's response has been to offer a series of specialized glossy catalogs and trained sales personnel to aid customers in their product selection effort. To a manufacturer, these catalogs are costly to create, distribute, and update. To a consumer, these catalogs are cumbersome to use and store. In order to further breakdown obstacles between a customer's need to obtain a product and purchase of the right product, a manufacturer may offer what is typically a large catalog or series of catalogs of product offerings, electronically. An electronic catalog offers the convenience of compact physical size coupled with automated search and retrieval.

One known search method of automated search and retrieval employs Boolean logic and keyword searching. The Boolean logic keyword search is appropriate for locating concepts discussed in textbased references. The Boolean search is based on certain words or word relationships contained in a relevant collection of materials. Formulating an accurate and efficient Boolean search requires a certain level of knowledge about the structure of the data, the type of material being searched, the classification of the data if there is one, and any keywords or standard terminology likely to be used to express the concepts being searched. The Boolean logic keyword search is beneficial because it permits a user to formulate a search that accurately reflects

certain priorities for the search. The Boolean logic keyword search, however, is inappropriate for locating a particular mix of feature alternatives within a database of product information. One searching for certain information may not be familiar with the terminology used in selecting a particular product. Multiple products may use different but synonymous terms. A concept expressed by a standard industry term in one industry may be different from a standard industry term in a different industry. A keyword search would require searching on all synonyms used in order to ensure a complete and accurate result.

Other interactive user interfaces use a hierarchial search. Hierarchial searches may also be referred to as tree searches and are a form of guided search. A variation of the hierarchial search is disclosed in U.S. Pat. No. 4,821,211 to Torres. A hierarchial search method offers a list of alternatives from which to select. The first list of alternatives has the highest priority and defines the profile of or relates to the remaining alternatives. Once selected, the system branches to another screen or lower level screen with another list of alternatives. The next list of alternatives having a lower priority. The system branches down through the various menus of alternatives having decreasing priority levels. There are known various methods of presenting graphical representations of a hierarchy to a user to help a user understand the current position within the hierarchy and the options for further movement within the hierarchy. A hierarchial search is appropriate for narrowing down to a subset of items from which to select based on alternatives having a fixed or necessarily depending priority level. Using this method, the available alternatives shown on any screen depend upon prior alternative selections. The hierarchial search is beneficial in that it is guided. A guided search meaning that use of the search does not require knowledge of the terminology used within the database due to the fact that terms for the available concepts are offered to a user. A user then makes a selection before proceeding to the next level. The hierarchial search, however, is cumbersome unless the selection of one alternative obviates the availability of other alternatives. Unless a user knows exactly what he or she wants and with what priority, each "branch" in the tree must be explored in order to gather an understanding of how certain selections affect remaining alternatives. In the case of a list of product offerings, given a set of alternative features for a single product, a number of people will have differing priorities for those alternatives and the priorities will have varying weights. Another disadvantage of the hierarchial search is that the greater the number of alternatives and permutations of alternative selections, the more levels there are from which to select additional alternatives. Multiple levels of screens increase the time and complexity of the search and are not as user-friendly or as intuitive to use as a simpler single screen user interface. The need for a nonhierarchial guided parametric search is based on the principle that given a family of items having certain features associated therewith each feature having respective alternatives, the number of products actually offered by a manufacturer is less than the number of possible permutations of alternatives. For the purposes of a simple illustration, a family of items may be cars in which features include color, number of doors, transmission style, braking style, etc. If a feature of a car is color, respective alternatives may be red, white, and blue. If a feature is transmission styles, respective alternatives may be automatic, three speed, four speed, and five speed. The vast number of permutations coupled with the fact that only a subset of the permutations are actually offered for sale as products is a source of

frustration to a customer with a given set of needs. For instance red cars may come only with manual transmission and not automatic transmission. As features and alternatives proliferate, so does the level of frustration in isolating the one desired item. Accordingly, there is a need for a method to aid a user in identifying an item among a family of items based on selections of alternatives among features associated with the items.

Different customers have different preferences, and in many cases a customer is somewhat flexible concerning the product to buy as long as the customer is informed as to how the selection of one alternative affects the availability of another alternative. In addition, one customer may want a red car and accept manual transmission, while another customer must have automatic transmission and color is unimportant. Accordingly, there is a need for a search method that provides information interactively as to how certain alternative selections affect the number of remaining alternatives and/or matching items and allows a user to modify selection priorities during the course of the search.

There remains a need, therefore, for an automated search and retrieval system that can assist a user in finding a product having appropriate features to address identified needs and priorities of needs.

Associated with some known electronic search and retrieval systems is a certain amount of frustration when the defined search does not identify a single item. The user is obliged to further widen the field of search or modify a search criteria in order to identify any parts. The need to oblige the user to widen the field of search is due to the fact that hierarchial and keyword Boolean searches do not have any information in the search criteria to permit automatic adjustment of the field of search. There is a need therefore, for a electronic search method that is able to guarantee a user that at least one item will be identified.

SUMMARY OF THE INVENTION

It is therefore an object of the invention to provide a guided parametric search to isolate a subfamily of items within a family of items based on alternatives associated with each item.

It is a further object of the invention to organize the alternatives into groupings visually relating a feature and respective alternatives.

It is a further object of the invention to provide an automated search that interactively indicates how selected alternatives affects availability of remaining alternatives.

It is a further object of the present invention to provide an automated search method that can guarantee identification of at least one item for each search.

It is a feature of the present invention that a user is assisted in identifying a subfamily of items within a family of items by: providing a computer readable data file of stored information representing at least one family of items, the data file identifying at least one alternative for each item, reading the data file, displaying a feature screen indicating said alternatives represented in the family, accepting selected alternatives, determining the subfamily of items where each item in the subfamily satisfies the selected alternatives, determining available alternatives represented in the subfamily and unavailable alternatives unrepresented in the subfamily, and revising the feature screen indicating the available alternatives as distinct from the unavailable alternatives.

It is an advantage of the invention that revision of the feature screen provides an indication to the user as to how

selected alternatives, or selection criteria, affect the profile of the subfamily satisfying the selection criteria. The revision answers the question; How does the selection of one alternative affect my remaining alternatives?

It is a feature of the invention that the process may be implemented in a server and client configuration for use on the Internet.

It is an advantage of the invention that an Internet configuration may be used as an electronic catalog, providing an electronic alternative to updating and distributing product and/or service information.

Other advantages and results of the invention are apparent from the following detailed description by way of example, from accompanying drawings, and from the spirit and scope of the appended claims.

BRIEF DESCRIPTION OF THE DRAWINGS

FIG. 1 is a view of a Main Menu screen.

FIG. 2 is a view of an Alphabetical Search screen.

FIG. 3 is a view of a second level Picture Search screen.

FIG. 4 is a view of a View catalog screen.

FIG. 5 is a view of a Catalog page screen.

FIG. 6 is a view of a View part number information screen.

FIG. 7 is a view of a feature screen prior to selections of alternatives having been made by a user.

FIG. 8 is a view of a feature screen subsequent to a single selection of an alternative and completion of a search initiated by a user after revision based upon the results of the search.

FIG. 9 is a view of a revised feature screen subsequent to a second selection of an alternative from the revised feature screen shown in FIG. 8 and completion of a search initiated by a user after revision based upon the results of the search which has identified a single item.

FIG. 10 is a view of a Property screen for the item identified in the feature screen in FIG. 9.

FIG. 11 is a graphical representation of the Database Organization Datafile and example data records therein.

FIG. 12 is a graphical representation of the Part Number Features Datafile and example data records therein.

FIG. 13 is a graphical representation of the feature screen Group Datafile and example data records therein.

FIG. 14 is a graphical representation of the feature screen Description Datafile and example data records therein.

FIG. 15 is a graphical representation of the Feature Name Datafile and example data records therein.

FIG. 16 is a graphical representation of the Feature Value Datafile and example data records therein.

FIG. 17 is a graphical representation of the feature screen Image Datafile and example data records therein.

FIG. 18 is a graphical representation of the Part Number Properties Datafile and example data records therein.

FIG. 19 is a graphical representation of the Extra Properties Datafile and example data records therein.

FIG. 20 is a graphical representation of the Screen Title Datafile and example data records therein.

FIG. 21 is a graphical representation of the program flow of an embodiment of the feature screen creation operation labeling the groupings for a unique feature screen.

FIG. 22 is a graphical representation of the program flow of an embodiment of the feature screen creation operation labeling the alternatives.

FIG. 23 is a graphical representation of the program flow of an embodiment of the Search operation initiated from the feature screen.

FIG. 24 is a graphical representation of the program flow of an embodiment of the feature screen revision operation.

FIG. 25 is a representation of a server and client configuration and the flow of data therebetween.

FIG. 26 is a feature screen used in a preferred embodiment of the invention in an Internet environment.

FIG. 27 is a feature screen revised from the feature screen of FIG. 26 and having "Non-Insulation Support" and "None" for the "Specials" feature as selected alternatives and is updated with available alternatives underlined and unavailable alternatives not underlined.

FIG. 28 is a further revision of the feature screen of FIG. 27 narrowing down the subfamily to thirteen items.

FIG. 29 is a further revision of the feature screen of FIG. 28 narrowing down the subfamily to one item.

FIG. 30 is a property screen used in a preferred embodiment of the invention in the Internet environment.

FIG. 31 is a main menu used in a preferred embodiment of the invention in the Internet environment.

FIG. 32 is an alphabetical search menu used in a preferred embodiment of the invention in the Internet environment.

FIGS. 33 and 34 is a first and second level picture search menu respectively used in a preferred embodiment of the invention in the Internet environment.

FIG. 35 is a view part number menu used in a preferred embodiment of the invention in the Internet environment.

DETAILED DESCRIPTION

A nonhierarchical guided parametric search is executed on a computer and permits a user to select a family of items 1 from among a plurality of families of electrical connectors, via a Main Menu 40. A family of items 1 could be any commercial product or service offering with a common set of features 5 and alternatives 6, associated therewith. Preferably, the alternatives 6 are item qualifiers and related to customer purchase options and criteria. In a preferred embodiment, an example of a family of items 1 is FASTON Receptacles-Uninsulated. EASTON is a trademark of AMP Incorporated. Alternative embodiments may include a family 1 of service providers having features 5 and alternatives 6 relating to provider qualifications. It is apparent, therefore, that "family" as used herein is broadly defined as a collection of offerings with specific qualifiers and/or attributes, where one would want to identify an offering by specifying its qualifiers and/or attributes. The preferred embodiment, however, is adapted to a family of physical items, specifically electrical connectors.

An example of the Main Menu 40 is shown in FIG. 1. The Main Menu 40 offers an interactive pick for an Alphabetical Search 41, a Picture Search 42, a View Catalog 43, or a Get Part Number Information 44 as methods for identifying a single family of items 1. The About pick 49 provides administrative information about the vendor such as telephone number, address, and facsimile phone number. The Exit pick 50 exits to the computer operating system.

An example of an Alphabetical Search menu is shown in FIG. 2. The Alphabetical Search pick 41 provides to the user a list box 15 comprising alphabetical listbox entries 16 of industry standard terms and proprietary terms for product families 1 that are available on a data file to be searched. Each listbox entry 16 in the Alphabetical Search menu

represents either a subfamily 2, a family of items 1 or a cluster of families 4. The user selects an alphabetical entry 16 and OK pick 51. If the selected listbox entry 16 represents a cluster of families 4, the system branches to a picture search 42 described herein below. The user further delineates the family of items 1 that is of interest by further selection within the cluster 4 using a hierarchical selection method. If the alphabetical entry 16 requires no further delineation, the system branches to a feature screen 9. The cancel pick 52 returns the user to the Main menu 40.

The user enters a Picture Search Menu via either the picture search pick 42 from the Main Menu 40 or by selecting an alphabetical entry 16 from the Alphabetical Search Menu 41 that requires further delineation before identifying a single family of items 1. A picture search provides to the user a display of a series of pictures 17, each picture 17 representing either a family cluster 4 or a family of items 1 that are available to be searched. A series of picture 17 appears on one or more display pages. A page marker 58 indicates the current page and the total number of pages in the display. Prior screen pushbutton 201 returns the user to the prior screen. Home pushbutton 202 returns the user to the Main Menu 40. Help pushbutton 203 provides help text for the picture screen. The user, via a mouse or other pointing device, moves an interactive pointer 39 from picture to picture 17. As the pointer 39 passes over each picture 17, a picture subtitle 48a, indicating the name of the family 1 or cluster of families 4 represented by the picture 17, changes accordingly. The user selects a family 1 or cluster of families 4, by clicking the mouse as the pointer 39 is positioned over the desired representative picture 17. If the selected picture represents a family cluster 4, the system branches to a lower level picture search. An example of a second level picture search menu is shown in FIG. 3. In the lower level picture search, the system provides to the user a display of a series of pictures that further delineates the families 1 available within the selected family cluster 4. The user again selects one of the pictures presented and continues in this hierarchical fashion until isolating a selection that represents a single family of items 1. If the selected picture represents a single family 1, the system branches directly to the feature screen 9.

The View Catalog pick 43 provides the user with one of three types of free field entry. The user selects a radio button 23 to identify the nature of a free field entry 21. In a preferred embodiment, the user may select to enter by a part number 18, by a code associated with a part number that is identified by AMP Incorporated as a FaxCode 19, or a catalog number 20. The user enters an identifying number in the free field entry 21. Upon entry, the system electronically displays a catalog page for the identified item. An example of a catalog page is in FIG. 5. Once an item is selected, the system permits the user to branch to a display of tools and other items related to the identified item 3 by selecting the view option 53. A user may choose the zoom option 54 to display the catalog page in a size that is one hundred percent of the original size of the actual paper based catalog page. Zoom is purely a scaling function of the existing screen display. A user may choose the page option 55 to page through electronic displays of catalog pages as one might page through a paper based catalog system.

The Get Part Number Information pick 44 provides the user with a part number entry 21. The user enters a part number indicative of a single item 3. The user selects the radio button 23 to choose either a feature screen display or a Detailed Information Screen display for the item entered. If the part number is an item within the data file, the system

retrieves the item **3** and identifies the family **1** associated with the part number and branches to the selected screen.

The process up to this point identifies a family **1** of items using conventional hierarchical techniques. Other methods of identifying a family **1** are equally appropriate.

Upon identification of a family **1** to search, the system provides to the user the feature screen **9**. Identification of a subfamily or item is processed from the same feature screen **9**. The minimum computing system required to run the process disclosed hereinafter has an Intel 80386 microprocessor or compatible upgrade with 4 MBytes of RAM memory, MS DOS revision 6.0 or compatible upgrade, Microsoft Windows revision 3.1 or compatible upgrade, a mouse or other pointing device, a hard disk with 2 MBytes of free disk space, and a Windows compatible CD-ROM drive.

The feature screen **9**, as shown in FIGS. **7** through **9**, provides a display of a series of groupings **13** associated with the selected family **1**. Each grouping **13** comprises one of the features **5** and a plurality of respective alternatives **6**, each feature **5** and respective alternatives being represented within the family **1**. Each feature **5** generally describes a category of subject of the respective alternatives **6**. The grouping **13** visually relates the feature **5** to its respective alternatives **6** by the proximity of feature **5** to respective alternatives and by a frame **24** enclosing them. Each grouping **13** contains either a plurality of the radiobuttons **23** or one listbox **15**. Each alternative **6** has associated therewith, a user selector. The user selector may be in the form of a radiobutton **23** that is white to denote nonselection ("off") and partially filled in black to denote selection ("on"). A user selector may also be in the form of a listbox entry **16** that is in a standard font to denote nonselection ("off") and is in a reverse font to denote selection ("on"). The alternatives **6** may be selected or deselected via the radiobuttons **23** or listbox entries **16** to create selected alternatives **37**. The feature screen **9**, therefore, provides a guided search in that it presents terminology for the features **5** and the alternatives **6** to the user prior to a search. A screen title **48** appears centered at the top of the display and the representative picture **17** appears in the upper right corner of the display. A matching quantity box **47** and part number identification box **46** appear at the upper left corner of the display.

Positioning the interactive pointer **39** and clicking the mouse once, toggles a radiobutton **23** or listbox entry **16** to select ("on") or deselect ("off") an alternative **6**. While in the feature screen **9**, the user may select and deselect turning radiobuttons **23** and listbox entries **16** "on" and "off" as desired. In response to a user initiated signal to perform a search, the system retrieves information concerning which user selectors **16**, **23** are turned "on" and to which alternatives **6** the user selectors **16**, **23** that are turned "on" relate. The alternatives **6** turned "on" are the selected alternatives **37** and constitute the selection criteria **14** used in the search to generate a subfamily **2**. In a preferred embodiment of the system, a double mouse click on a user selector **23** or **16** that is turned "off" selects the alternative **6** and then performs a search using the selection criteria **14**.

A series of pushbuttons **201** through **208** are positioned below the matching quantity box **47** and part number identification box **46**. Actuation of any one of the pushbuttons **201** through **208** via a mouse click performs a different system function. The prior screen pushbutton **201** returns the user to the prior screen. The home pushbutton **202** returns the user to the Main Menu **40**. Help pushbutton **203** provides the user with help information concerning the current screen.

Criteria hold pushbutton **204** "holds" or memorizes the current selection criteria **14** for later use. Criteria apply pushbutton **205** "applies" the selection criteria **14** most recently "held" using the criteria hold pushbutton **204**. Advantageously, a selection criteria **14** "held" while working with one family may be "applied" while working with a different family.

Erasure pushbutton **206** resets all currently selected alternatives **37**. Detail view pushbutton **207** displays a property screen **12**. An example of the property screen **12** is shown in FIG. **10**. Search pushbutton **208** performs a search according to the selection criteria **14**.

When the user initiates a search via the search pushbutton **208** or a double mouse click, the system gathers the selection criteria **14** from the user selectors **16**, **23** that are toggled "on", indicating the selected alternatives **37**. Using the selection criteria **14**, the system searches the family **1** for items **3** that satisfy the selection criteria **14**. A result of the search is a subfamily **2** of items, each item **3** within the subfamily **2** having alternatives **6** that match the selection criteria **14**. The system then searches the subfamily **2** to identify those alternatives **6** that remain available for further selection, available alternatives **7**, and those alternatives **6** that are available within the family **1**, but are mutually exclusive with the selection criteria **14** that generated the subfamily **2**, unavailable alternatives **8**.

Based on the available alternatives **7**, the system revises the feature screen **9**. A feature screen revised accordingly is shown in FIG. **8**. In FIG. **8**, the feature screen of FIG. **7** is revised after selection of alternative **6** "Magnet Wire" in the grouping associated with the feature **5** "Wire Type". Each selected alternative **37** is displayed in a bold font and underlined. Each available alternative **7** within the subfamily **2** is displayed in a bold font and is not underlined. The radiobutton **23** for each selected alternative **37** and each available alternative **7** is enabled, meaning that they may be toggled in order to modify the current selection criteria **14**. An exception exists if one of the groupings **13** comprises only one available alternative **7**. In that case, the available alternative **7** is a forced alternative **34** and is turned "on", and the associated radiobutton **23** is disabled meaning it may not be deselected. A forced alternative **34** indicates that for the selection criteria **14**, all items necessarily have the forced alternative **34**, and that there is no item satisfying the selection criteria **14** without the forced alternative **34**. In FIG. **8**, an example of a "forced" alternative is "None" in the "Specials" grouping **13**. This indicates that for all items **3** having "Magnet Wire" as a "Wire Type" there are no other "Specials" alternatives **6** other than "None". Each unavailable alternative **8** within the subfamily **2** is displayed on the feature screen **9** and within the grouping **13**, but is displayed in a grey shaded font. A radiobutton **23** associated with each unavailable alternative **8** is disabled. In the case of a grouping **13** that comprises one of the listboxes **15**, only available alternatives **7** are listed as listbox entries **16**. The feature screen **9** also displays the quantity of items in the subfamily **2** in a matching quantity box **47**.

After the feature screen is revised, the user may choose to modify the selection criteria **14** by selecting one or more available alternatives **7** or deselecting a selected alternative **37**. Unavailable alternatives **8** may not be selected to modify the selection criteria **14** as their associated radiobuttons **23** are disabled. Similarly, forced alternatives **34** may not be deselected. This impairs the user's ability to select mutually exclusive alternatives **6**.

The user may select one or more available alternatives **7** and then initiate a search by clicking twice or using the

search pushbutton 208. The system performs an identical search to the one disclosed hereinabove and revises the feature screen accordingly. By virtue of the fact that selected alternatives 37 are added to the selection criteria 14, the subfamily 2 that satisfies the selection criteria 14 necessarily has fewer items 3. A search and revision of the feature screen 9 after each selected alternative 37 provides to the user an indication of how selection of one alternative affects the availability of remaining alternatives 6. Presentation of the affect of selected alternatives guides the user in selecting appropriate alternatives 6 according to the user's priorities. Iterative selections, searches, and revisions progressively narrows the subfamily 2 to isolate and identify a manageable number of items according to user priorities. A narrowing of the subfamily 2 from the feature screen 9 shown in FIG. 8 is shown in FIG. 9 and identifies a single item 3.

If the user has turned more than one user selector "on" prior to processing a search, it is conceivable that the selection criteria 14 contains mutually exclusive alternatives and will produce a subfamily 2 containing zero items 3. In the event of a zero item subfamily 2, an embodiment of the system indicates that no items are identified, and returns the user to the feature screen prior to initiating a search. As a zero item subfamily situation is considered undesirable, when there are no items in a subfamily 2, in a preferred embodiment the system will deselect a most recently selected alternative 37 and perform the search with a revised selection criteria 14. The deselection process will iterate, automatically deselecting the most recently selected alternative until there is at least one item 3 in the subfamily 2. Sequential deselection will provide a prioritized approach of automatically revising the selection criteria 14 and guaranteeing identification of at least one item for every search initiated. Automated deselection is based on the assumption that the alternative selected first in time is the highest priority in the selection criteria 14, with subsequent selections of alternatives 6 having descending priority to the user.

The user may also modify the selection criteria 14 by deselecting one of the selected alternatives 37. Deselecting is accomplished by clicking the mouse once with the mouse pointer on one of the selected alternatives 37 to toggle the associated radiobutton 23 "off". User deselection of one of the selected alternatives 37 not part of the selection criteria 14 simply toggles the associated radiobutton 23 to "OFF". User deselection of one of the selected alternatives 37 that was part of the selection criteria 14 toggles the associated radiobutton 23 to "OFF" and, automatically initiates a search process to update the subfamily 2 and revise the feature screen 9 accordingly. User deselection and search is particularly helpful after identifying a family 1 via the Get Part Number Information Pick 44. Using the Get Part Number Information Menu and user deselection, the user, starting with a single part, may easily find a similar item by deselecting one or more of the selected alternatives 37.

In certain cases, a grouping 13 logically applies only if an alternative from a different grouping is selected. In this case, selection of a trigger alternative (not shown) within one grouping, will give rise to available alternatives 7 in a dependant grouping (not shown). Selection of one of the alternatives 6 in the dependant grouping will further refine the trigger alternative selection. With respect to cars for example, one grouping may be "transmission style" having "automatic transmission" and "manual transmission" as alternatives 6. The trigger alternative, "manual transmission", will give rise to the dependant grouping, "number of speeds" having alternatives 6 "three speed", "four speed", and "five speed". The alternatives 6 in the

dependent grouping are not applicable to the users selection criteria 14 unless the trigger alternative is selected. In a preferred embodiment, therefore, the dependant grouping will not be displayed until selection of the trigger alternative. Although this is part of a preferred embodiment, it is not included in the source code disclosed herein.

Alternatively, in a less preferred embodiment, all of the groupings 13 for a feature screen are initially displayed. If, as a result of a search and for a subfamily 2, all of the alternatives 6 within one of the groupings 13 are unavailable alternatives 8, the grouping 13 is hidden and is not displayed. An example of a hidden grouping is illustrated in FIGS. 7 and 8 wherein the "Line" feature has no available alternatives 7 for the selection criteria 14 comprising "Magnet Wire".

At any point in the feature screen 9, a user may select the detail view pushbutton 207 to branch to the property screen 12. An example of the property screen 12 is shown in FIG. 10. The property screen 12 displays the feature 5 and specific alternatives for a single item 3 in a tabular format, a feature table 32. The property screen 12 further displays additional properties 28 associated with the item 3 in a tabular format a property table 33. Also displayed is a picture display of a line art 29 associated with the item 3, a comment area 30 and a subfamily part number list 31. A user may select any one of the part number entries 16 in the subfamily part number listbox 31 for display in the property screen 12.

The prior screen pushbutton 201, home pushbutton 202, and help pushbutton 203 are available from the property screen 12. View catalog pushbutton 209 branches the user to a screen with a representation of a catalog page for the item identified. In the embodiment of an electronic catalog for electrical connectors, the view catalog pushbutton 209 branches to the screen an example of which is shown in FIG. 5. Print pushbutton 210 prints out the property screen 12.

The feature screen 9 and the processing associated therewith is a piece of an overall electronic catalog system which includes additional operations such as the Alphabetical search, Picture search, View Catalog, and Get Part Number Information. Only those datafiles and operations associated with the feature screen 9 and property screen 12 will be described hereinafter.

A Database Organization Datafile 60 defines the features 5 used in each unique feature screen 9 and the features 5 and properties 28 used in each unique property screen 12. A graphical representation of records in the Database Organization Datafile 60 is shown in FIG. 11. Each record in the Database Organization Datafile 60 defines a set of features or properties and has seventeen fields: screen type 601, screen 602, and feature one through feature fifteen 603. The screen type field 601 contains a value of "F" if the record defines features 5 and a value of "P" if the record defines properties 28. The screen field 602 contains a numerical value that represents each feature screen 9 or Property screen 12. If the screen type field 601 contains a value of "F", the feature one field 603 through feature fifteen field 603 each contains a value that represents one unique feature 5 associated with one of the groupings 13 on the feature screen 9. If the screen type field 601 contains a value of "P", the feature one field 603 through feature fifteen field 603 each contains a value representing one of the properties 28 to be listed on the property screen 12. The property screen 12 also uses the information in the record defining the feature screen 9 having the same value in the screen field 602 to display features 5 in the feature table 32. There are fifteen feature fields 603 per record. The feature screen 9,

therefore, may contain up to fifteen features **5** and the property screen **12** may contain up to fifteen features **5** in the feature table **32** and up to fifteen properties **28** in the property table **33**. If one or more of the feature fields **603** is blank, then the feature screen **9** or property screen **12** represented by the record will contain a number of groupings **13** less than fifteen and a property screen represented by the record will have fewer than 15 features in the feature table **32** and/or fewer than fifteen properties in the property table **33**.

A Part Number Features Datafile **61** indicates the alternatives **6** for each feature **5** represented by an item **3**. A graphical representation of records in the Part Number Features Datafile **61** is shown in FIG. **12**. Each record in the Part Number Features Datafile **61** has eighteen fields: screen **611**, item **612**, alternative one **613** through alternative fifteen **613**, and locate **614**. The Part Number Features Datafile screen field **611** contains a value representing one feature screen **9**. All records within the Part Number Features Datafile **61** having the same value in the screen field **611** constitute a family of items **1**. The value contained within the Part Number Features Datafile screen field **611** is used to cross reference to the Database Organization Datafile **62** screen field **602** having the same value and having a screen type field **601** containing a value of "F" for feature screen type. The feature one through feature fifteen fields **603** of the Database Organization Datafile **60** correspond directly to alternative one through alternative fifteen fields **613** in the Part Number Features Datafile **61**. The item field **612** contains a part number that represents a single item **3** in a family **1**. The alternative one field **613** through alternative fifteen field **613** each contain a value representing one alternative **6** that is associated with the item **3** represented by one record. Each item **3** may be defined by up to fifteen alternatives **6**. If any of the alternative one **613** through alternative fifteen fields **613** does not contain a value, then the field is unused and the alternative does not apply to the item. The locate field **614** contains a duplicate representation of the values contained in the feature screen field **611** and the alternative one through alternative fifteen fields **613**, in a single field.

In order to determine which alternatives **6** relate to each item **3**, cross reference is made between the Database Organization Datafile **60** and the Part Number Features Datafile **61**. Each record in the Part Number Features Datafiles **61**, defines one item **3**. Associated with the item, by virtue of being contained in the same record, is a value contained within the screen field **611**. Cross reference is made to the Database Organization Datafile **60** screen field **602** having the same value as the Part Number Features Datafiles **61** screen field **611** value and a screen type **601** value of "F". Values in the feature one **603** through feature fifteen fields **603** correspond to values in the alternative one **613** through alternative fifteen fields **613** to define which alternative **6** within each of the up to fifteen defined features **5** is represented by the item **3**. In this way, therefore, each item **3** is defined as comprising a characteristic set of alternatives **6**.

The Feature Screen Group Datafile **62** defines a profile of each feature screen **9** and the groupings **13** contained therein. A graphical representation of records in the feature screen Group Datafile **62** is shown in FIG. **13**. Each record of the feature screen Group Datafile **62** has four fields: a screen **621**, a grouping sequence **622**, selection type **623**, and feature **624**. The screen field **621** contains a value representing one feature screen. This number represents the same feature screen as is represented in all data files having

a screen field **602**, **611**, **621**, **631**, **692**, **661**, **671** and is used for cross referencing purposes. The feature field **624** contains a unique number associated with one feature **5** and the grouping sequence field **622** contains a value representing a placement sequence of the grouping **13** on the feature screen **9**. The selection type field **623** contains a value of "R" if alternatives **6** associated with the grouping **13** are selected via radio buttons **23** or a value of "L" if alternatives associated with the grouping **13** are selected via listbox entries **16**. Although not implemented in a preferred embodiment, alternatives **6** may also be selected via a checklist (not shown), in which case the selection type field **623** will have a value of "C".

The feature screen Description Datafile **63** defines the profile of the alternatives **6** for each feature **5** for a particular feature screen **9**. A graphical representation of records in the feature screen Description Datafile **63** is shown in FIG. **14**. Each record of the feature screen Description Datafile **63** has four fields: screen **631**, feature **632**, alternative sequence **633**, and alternative **634**. The screen field **631** and feature field **632** contain values representing one feature screen **9** and feature **6** respectively similar to those found in the feature screen Group Datafile **62** screen field **621** and feature field **624**. The alternative field **634** contains a value representing an alternative **6** of the feature **5** specified in feature field **632**. The alternative sequence field **633** represents the sequential position of the alternative **6** listed in alternative field **634** if the grouping **632** has a selection type **623** of radio button, "R", or checklist "C".

The Feature Name Datafile **64** cross references an alphanumeric name for each feature **5**. A graphical representation of records in the Feature Name Datafile **64** is shown in FIG. **15**. Each record has two fields: feature **641** and name **642**.

The Feature Value Datafile **65** cross references numbers representing features **5** and alternatives **6** with an alphanumeric name. A graphical representation of records in the Feature Value Datafile **65** is shown in FIG. **16**. Each record in the Feature Value Datafile **65** has three fields: feature **651**, alternative **652**, and name **653**. The system uses the value in the name field **653** to appropriately caption alternatives **6** within the groupings **13** on the feature screen **9**.

The feature screen Image Datafile **66** defines an image file name of the picture **17** that is displayed in the upper right hand corner of the feature screen **9**. A graphical representation of records in the feature screen Image Datafile **66** is shown in FIG. **17**. Each record in the feature screen Image Datafile **66** has two fields: a screen **661** and an image file name **662**. The value contained within the screen field **661** specifies the feature screen **9**. The value contained within the image file name field **662** is the name of a data file from which the system may retrieve a bitmapped representation of the representative picture **17** associated with the family of items **1** being searched in the specified feature screen **9**.

A Part Number Properties Datafile **67** indicates the alternatives **6** represented for each item **3** for use with the Property Screen **12**. A graphical representation of records in the Part Number Properties Datafile **67** is shown in FIG. **18**. Each record in the Part Number Properties Datafile **67** has seventeen fields; screen **671**, item **672**, and alternatives one **673** through alternative fifteen **673**. The Part Number Properties Datafile screen field **671** contains a value representing one property screen **12**. The value contained within the Part Number Properties Datafile screen field **671** is used to cross reference to the Database Organization Datafile **60** screen field **602** having the same value and having a screen type field **601** containing a value of "P" for property screen. The

item field **672** contains a part number that represents a single item **3**. The alternative one field **673**, alternative two field **673** through alternative fifteen field **673** each contain a value representing a single alternative **6** that is associated with the item **3** represented by one record. One item **3** is defined by up to fifteen alternatives. If any of the alternative one through alternative fifteen fields **673** does not contain a value, then the field is unused and the alternative does not apply.

An Extra Properties Datafile **68** defines additional characteristics for each item **3** for display in the Property Screen **12**. A graphical representation of records in the Extra Properties Datafile **68** is shown in FIG. **19**. The additional characteristics do not represent alternatives and may not be searched, they are, however, displayed in the comment area **30** on the Property screen **12** as additional item information. Each record has three fields; item **681**, comment **682**, and image **683**. The item field **681** contains a number representing one item **3**.

The Screen Title Datafile **69** cross references the screen number and screen type with an alphanumeric string. A graphical representation of records in the Screen Title Datafile **69** is shown in FIG. **20**. Each record in the Screen Title Datafile **69** has three fields: screen type **691**, screen **692**, and title **693**. The system uses the value in the title field **693** to appropriately label Screens with the identifying title **48** at the top of all system screens.

The minimum system requirements for development of software to implement the process herein disclosed includes all hardware required for the system to use the software as well as Microsoft Visual Basic 3.0 Professional Edition and Accusoft Image Library VBX.

There are three program level files associated with the feature screen; FEATURES.FRM, GLOBAL.BAS, DATA.BAS, and PROPRTI.FRM. The PROPRTI.FRM is used to process property screen forms. FEATURES.FRM contains variable declarations and subroutines used to process feature screen forms. GLOBAL.BAS contains variable declarations global to the entire electronic catalog application software. DATA.BAS contains subroutines, global to the entire application software, that are executed by FEATURES.FRM, PROPRTI.FRM as well as other application forms. There are three main operations executed by FEATURES.FRM; feature screen Creation, Search, and feature screen Revision. Central to all three operations is a FrameInfo data array having one to fifteen elements.

GLOBAL.BAS defines the global variable FrameInfo having a data structure of FrameInfoType. FrameInfoType is also defined in GLOBAL.BAS. In a preferred embodiment, the FrameInfoType data structure includes; Feature, Type, CurSelection, DBColumn, DBFeatureNum, RBFeatVal array from 0 to 7 elements, RBStatus array from 0 to 7 elements, SelectionOrder and NotApplicable, and is initialized to zero at the start of the feature screen operation. The executable code for the feature screen also uses a form, FRM **101**, which is defined off line using the Visual Basic software tool. FRM **101** defines, among other things, an interactive screen having fifteen frames and all relevant pushbuttons **25**, each frame **24** containing eight radiobuttons **23** and a listbox **15**. FRM **101** is a general and consistent screen structure adapted by FrameInfo data to display a particular feature screen **9**.

After identifying a particular family of items **1** to search using the Alphabetical Search, the Picture Search, the Get Part Number Information, or other identification system, the system uses FEATURES.FRM passing to it a global variable

ScreenNum **102**. ScreenNum **102** indicates a numerical code for the appropriate feature screen **9** and is associated with one family of items **1** to be searched. ScreenNum **102** is the value contained in the screen fields **602**, **611**, **621**, **631**, **661**, **671** and **692** associated with a particular feature screen **9**.

The feature screen creation operation comprises an iterative loop that loads the FrameInfo data array in proper sequential grouping order with the appropriate data. A graphical representation of an embodiment of the feature screen creation operation flow to provide the grouping captions **57** is shown in FIG. **21**. A loop repeats for each grouping **13** defined for the feature screen **9** incrementing an ordinate **103** for each iteration. The number of groupings **13** and hence the number of iterations of the loop is up to fifteen in a preferred embodiment, although the system does not preclude modification of this number. For each sequential grouping **13**, the system accesses the feature screen Group Datafile **62** to locate the record having a value in the screen field **621** and grouping sequence field **622** equal to ScreenNum **102** and the current FrameInfo ordinate **103** respectively. For the record located, FrameInfo(ordinate).Type is set equal to the value in the selection type field **623** and FrameInfo(ordinate).Feature is set equal to the value in the feature field **624**. If FrameInfo(ordinate).Type is equal to "L", then the listbox **15** for the grouping **13** identified in the grouping sequence field **622** is made visible. In a preferred embodiment, if there are more than eight alternatives **6** associated with one of the groupings **13**, the grouping **13** comprises a listbox **15**. The system uses the value in FrameInfo(ordinate).Feature to cross reference the Feature Name Datafile **64** and locates the record having the same value in the feature field **641**. The caption **57** of the grouping **13** is set equal to the string value in the name field **642** of the record. The above operation continues, the result of which is to provide the caption **57** or name, representing a feature **5**, for each grouping **13** on the feature screen **9**.

The feature screen creation operation further comprises iterating a FrameInfo ordinate **103** from one to as many groupings **13** that exist for the feature screen **9**. A graphical representation of an embodiment of the feature screen creation operation program flow labeling the alternatives **6** is shown in FIG. **22**. A nested operation iterates a count **104** corresponding to the number of alternatives **6** within the grouping **13** from zero to as many records as are found. When no matching records are found, the count is reset to zero, and the ordinate increments. The system uses ScreenNum **102**, FrameInfo(ordinate).Feature, and count **104** plus one to cross reference the feature screen Description Datafile **63** and locate the record having matching values in the screen field **631**, feature field **632**, and alternative sequence field **633** respectively. The system uses FrameInfo(ordinate).Feature and alternative field **634** in the matching record in the feature screen Description Datafile **63** to cross reference the Feature Value Datafile **65** and locate a record having a match with the feature **651** and alternative **652** fields respectively. The name field **653** of the located record is used to label the respective alternative **6**.

If FrameInfo(ordinate).Type is equal to "R", meaning that the grouping **13** is a set of radiobuttons **23**, FrameInfo(ordinate).RBFeatVal(count) is set equal to the value in the alternative field **634** of the matching record in the feature screen Description Datafile **63**. The radiobutton **23** is labeled with the string value in the name field **653** of the matching record in the Feature Value Datafile **65**.

If the FrameInfo(ordinate).Type has a value of "L", meaning that the grouping **13** is a listbox **15**, the same cross referencing and locating a matching record in the feature

screen Description Datafile 63 and the Feature Value Datafile 65 as in the case of the radiobutton 23 described hereinabove applies. In the case of a listbox 15, however, the Visual Basic system organizes listbox entries 16 alphabetically. The string value in the name field 653 is inserted as a listbox entry 16 for the grouping 13. The value in the alternative field 634 is stored in an ItemData array (not shown) associated with the listbox 15. The ItemData array is inherent to Microsoft Windows and is part of a conventional listbox definition and building operation of Visual Basic. The result of the operation is properly captioned alternatives 6, as either radiobuttons 23 or listbox entries 16 for each grouping 13 used in the feature screen 9. In a preferred embodiment, if there are more than 8 alternatives 6 for one of the feature 5 in the family 1, the grouping 13 comprises a listbox. This particular distinction between the appropriate grouping style is a matter of design choice. When the grouping 13 and alternative 6 captions are set, the system adjusts the size of frames surrounding each grouping 13 to aesthetically pleasing proportions and adjacent spacings.

The feature screen creation operation further comprises identifying, for each grouping 13, the column position of a corresponding feature 5 in the Database Organization Datafile 60. The column position is stored into FrameInfo.DBColumn. The program flow of this operation is not shown in the drawings. The system locates the record in the Database Organization Datafile 60 having a value of "F", meaning feature screen, in screen type field 601, and a value in the screen field 602 equal to ScreenNum 102. The FrameInfo.DBFeatureNum array is set equal to the values in the feature one 603 through grouping fifteen fields 603 respectively for the record located. Incrementing the ordinate for each value in the FrameInfo(ordinate).Feature array, the system locates the position of the equivalent value in the FrameInfo.DBFeatureNum array. FrameInfo(ordinate).DBColumn is set equal to the position of the equivalent value in the FrameInfo.DBFeatureNum array.

Subsequent to the feature screen creation operation, response to the user's mouse movements and mouse clicks are administered by the Visual Basic System. If the user clicks on one of the radiobuttons 23, the system executes a subroutine entitled Radio_Click defined in FEATURES.FRM. Based upon the vicinity of the pointer 39, the system identifies the sequential position of a current grouping 35 within the feature screen 9 and the sequential position of a current alternative 36 within the current grouping 35 to identify a FrameInfo(ordinate).RBStatus(count). If the pointer 39 is resting on one of the available alternatives 7 that is also an unselected alternative 38, the FrameInfo.CurSelection for the current grouping 35 is set equal to the value of the current alternative 36 and FrameInfo.RBStatus for the current grouping 35 and the current alternative 36 is set to a negative one meaning "SELECTED". In a preferred embodiment capable of the automated deselective search, when one of the alternatives 6 is selected, the FrameInfo.SelectionOrder for the current grouping 35 is set equal to a NumberOfSelections variable (not shown) plus one and the NumberOfSelections variable is incremented. If the pointer 39 is resting on one of the alternatives having a FrameInfo.RBStatus of negative two meaning "FORCED" or zero meaning that it is one of the unavailable alternatives 8, there is no operation. If the pointer 39 is resting on one of the available alternatives 7 that is selected, then FrameInfo.CurSelection for the current grouping is reset. The NumberOfSelections variable is decremented and the FrameInfo.Selection order is resequenced. The system initiates a search operation.

If the user clicks on one of the listbox entries 16, the system executes a subroutine entitled ListBox_click in FEATURES.FRM. The system identifies the current grouping 35 and the current alternative 36. If the pointer 39 is resting on one of the available alternatives 7 that is not selected, the FrameInfo.CurSelection for the current grouping 35 is set equal to the current alternative 36 and FrameInfo.SelectionOrder is set equal to a value of the maximum current SelectionOrder which is expressed in the NumberOfSelections variable plus one and the NumberOfSelections variable is incremented. If the pointer 39 is resting on one of the available alternatives 7 that is selected, then FrameInfo.CurSelection for the current grouping 35 is reset. The NumberOfSelections variable is decremented and the FrameInfo.Selection order is resequenced. The system initiates a search operation.

When the user either selects the search pushbutton 208 or double clicks on one of the unselected alternatives 38, the system performs a search operation using the current selection criteria 14. The current selection criteria 14 is defined as the set of selected alternatives 37 for the feature screen in which the user is operating, and is found in the FrameInfo.CurSelection array. A graphical representation of an embodiment of the search operation program flow is shown in FIG. 23. At the beginning of the search, in order to administer the radiobuttons 23, the system initializes the FrameInfo.RBStatus array for all available alternatives 7 to zero, and initializes FrameInfo.NotApplicable for all groupings 13 to zero. In order to administer the listboxes 15, a two dimensional dynamically allocated ListStatus array (not shown) is declared having a first dimension of fifteen and a second dimension of one. A ListStatusSize variable (not shown) is initialized to one and retains a value representing the size of the second dimension of the ListStatus array. A ListCounter array (not shown) having fifteen elements records the number of entries 16 added to each listbox 15 and is initialized to zero.

The system identifies all of the items 3 that match the current selection criteria 14. Using FrameInfo.CurSelection the system cross references to the Part Number Features Datafile 61 to locate a record having a value in the appropriate alternative field 613 equivalent to the first nonzero Frame Info.CurSelection. Incrementing an ordinate 103, the system identifies a FrameInfo(ordinate).CurSelection having a value greater than zero. FrameInfo(ordinate).DBColumn is used to identify the appropriate column in the Part Number Features Datafile 61. The system locates a record in the Part Number Features Datafile 61 having a matching value in the appropriate column. When a record is located having the alternative 6 that matches, the system compares the remaining alternatives 6 in the selection criteria 14 against values in the alternative fields 613 corresponding to the alternatives in the selection criteria 14. The system checks the remaining nonzero FrameInfo.CurSelection value against values in the appropriate alternative one through alternative fifteen fields 613. If all of the selected alternatives 37 in the selection criteria 14 have a corresponding alternative field 613 in the located record, the located record is a matching record for the current selection criteria 14. The matching record, therefore, represents an item 3 in the subfamily 2.

The system processes each item 3 in the subfamily 2 to identify which alternatives 6 are available alternatives 7 within the subfamily 2. If the record is a matching record, the alternative fields 613 in the matching record not specified in the selection criteria 14, are processed in an iterative loop to update the available alternatives 7 and unavailable

alternatives **8** in FrameInfo. FrameInfo is used to revise the feature screen **9** based upon the results of the selection criteria **14** and search or more precisely, based upon the existing subfamily **2**.

For each alternative field **613** checked, the following operation applies. If the alternative field **613** has no value, meaning that the grouping **13** associated with the alternative field **613** is not applicable to the item **3** defined in the matching record, the FrameInfo.NotApplicable is set to a value of one. The FrameInfo.NotApplicable variable is, therefore, zero if all items **3** in the subfamily **2** have a value in the alternative field **613** for the respective grouping **13**, and is nonzero if any one item **3** in the subfamily **2** has no value in the respective alternative field **613** for the respective grouping **13**. FrameInfo.NotApplicable having a nonzero value indicates that the associated grouping does not logically apply to all of the items in the subfamily **2**. Therefore, with respect to a preferred embodiment, if FrameInfo.NotApplicable is set to nonzero, the respective grouping **13** is not displayed. Alternatively, in a less preferred embodiment, a grouping **13** is not displayed if all of the respective alternatives **6** are unavailable alternatives **8**.

If the grouping **13** is a set of radiobuttons **23**, and the alternative field **613** has a value, FrameInfo.RBStatus associated with the grouping **13** and alternative **6** specified in the alternative field **613** is set to a one, meaning that the radiobutton **23** for the specified alternative **6** is an available alternative **7**. Available alternatives **7** are shown on the feature screen **9** in a bold font. If the grouping **13** is a listbox **15** and the alternative field **613** has a value, the system determines whether the alternative **6** specified in the alternative field **613** is already listed in the ListStatus array. If the alternative **6** has not already been added, the ListCounter is incremented for the respective listbox **15**, the ListStatusSize is set to reflect the size of the largest listbox, and if necessary, the ListStatus array **110** is dynamically allocated a single additional element. The ListStatus array **110** for the sequential position of the grouping **13**, specified in the first dimension, and the sequential position of the alternative **6**, specified in the second dimension, is set equal to the value in the alternative field **613**. The operation repeats for all alternative fields **613** that were not used to locate an item from the selection criteria.

In a preferred embodiment, if a search operation results in a subfamily **2** having no items **3**, the most recently selected alternative will be automatically deselected and the search operation will repeat with the revised selection criteria **14**. The automatic deselection of the most recently selected alternative will repeat until the search operation results in a subfamily **2** having at least one item **3**. Although not implemented in the source code of the software disclosed herein, the automatic deselection operation would be implemented as follows. Where FrameInfo (ordinate).SelectionOrder is equal to the NumberOfSelections variable, the FrameInfo(ordinate).CurSelection and FrameInfo(ordinate).SelectionOrder will be reset to zero, and the Number of Selections will be decremented. The same search process will be initiated using the new selection criteria **14**. The automatic deselection will repeat until the search results in a subfamily **2** having one or more items **3**.

The entire FrameInfo updating process occurs for every record in the Part Number Features Datafile **61**. The results of the Searching operation are updated FrameInfo and ListStatus arrays. The FrameInfo and ListStatus arrays are used to revise the feature screen according to the results of the search.

Using the updated FrameInfo and ListStatus arrays, the system revises the feature screen **9** accordingly in the feature

screen revision operation. A graphical representation of an embodiment of the feature screen revision operation is shown in FIG. **24**. The feature screen revision operation comprises enabling radiobuttons **23** for the available alternatives **7**, disabling the radiobuttons **23** for the unavailable alternatives **8**, identifying and disabling the radiobuttons **23** for forced alternatives **34**, updating the ItemData array with listbox entries **16** for the available alternatives **7** and unavailable alternatives **8**, and removing the grouping **13** from the feature screen **9** if all of the alternatives **6** in the grouping **13** are unavailable alternatives **8**. A loop incrementing the ordinate **103** iterates for each grouping **13**. In a preferred embodiment, if FrameInfo.NotApplicable is nonzero, the grouping **13** associated with the FrameInfo (ordinate) will not be displayed. If the grouping **13** comprises radiobuttons **23**, the radiobutton **23** associated with each element in the FrameInfo.RBStatus array that equals zero is disabled. If the grouping **13** is a listbox **15**, the ListStatus array for the grouping **13** is searched against the ItemData array. If an element in the ItemData array for the grouping **13** is not found in the ListStatus array **110**, it is removed from the ItemData array and therefore does not appear as one of the listbox entries **16**. For each grouping **13** that does not contain a selected alternative **37**, the system counts the number of available alternatives **7** in the FrameInfo(ordinate).RBStatus array. If there is one and only available alternative **7**, the one available alternative **7** is set to a negative two, meaning "FORCED", and the associated radiobutton **23** is turned "on" and is displayed as partially filled in black, but it is disabled meaning that it may not be toggled to "off" during the feature screen manipulation operation.

After the feature screen revision operation, the system returns to the feature screen manipulation operation permitting the user to modify the selection criteria **14** based upon the results of the search.

In an embodiment of the invention in an Internet environment, there is a server computer **125** and a client computer **126**. All of the program files and data files described in the local embodiment reside on the server **125**. In the Internet embodiment, the server **125** comprises a computer having a minimum of 8 Mbytes of RAM and 50 MBytes of available hard disk memory and an Intel Pentium processor running Microsoft Windows 3.1. The server **125** may have hardware access to the Internet via any conventional method. Server **125** communication on the Internet uses Microsoft Windows World Wide Web Server using HyperText Transport Protocol ("HTTPD") from the National Center for Supercomputing Applications ("NCSA") at the University of Illinois and Windows TCP/IP package that supports Windows Sockets interface, preferably Chameleon TCP/IP for Windows by NetManage, Inc. of Cupertino, Calif. The client **126** is a computer having a minimum of 4 MBytes of RAM and an Intel 80386 processor running Microsoft Windows 3.1 and having a display device, keyboard, and mouse. The client **126** has TCP/IP access to the Internet, such as Chameleon by NetManage. The client **126** also requires a Mosaic compatible browser, such as AIR Mosaic by SPRY, Inc. of Seattle, Wash.

A preferred embodiment of the Internet embodiment of the electronic catalog application mirrors the user flow in the local embodiment as much as possible. Based upon certain restrictions inherent in current Internet capabilities with respect to building an interactive screen, the feature screen **9** for the Internet embodiment has a layout that is slightly different from the local embodiment. The feature screen **9** for the Internet embodiment is shown by way of example in FIGS. **26** through **29**.

The client 126 initiates a request to the server 125 for the electronic catalog searching application via the Internet. The server 125 detects the request. Receipt of the request executes the requested application on the server 125 that permits a user on the client 126 to select a family 1 or subfamily 2. Example of Main Menu, Alphabetical search, Picture Search, and View Part Number screens are shown in FIGS. 31 through 35. When the family 1 or subfamily 2 is chosen, the server 125 sends a feature screen status 127 to the client 126. The feature screen status 127 comprises a feature screen code, ScreenNum 102 in a preferred embodiment, all features 5 appropriate to the feature screen 9 specified in ScreenNum 102, all available alternatives 7, all unavailable alternatives 8, and the selection criteria 14. As the selection criteria 14 is always sent, it may comprise zero selected alternatives 37. It is apparent, therefore, that the server 125 sends all of the information necessary to define the current subfamily 2 to the client 126. The information, therefore, need not be retained in memory on the server 125. This particular feature renders it particularly appropriate for an Internet environment. The client 126 receives the feature screen status 127 and displays the feature screen 9 accordingly. An example of the feature screen 9 on the Internet is shown in FIG. 26 through 29. The user on the client, makes selections from among the available alternatives 7 generating a selection criteria 14 different from that which was set to it. The client 126 initiates a search with the modified selection criteria 14. The client 126 sends to the server 125, the ScreenNum 102 value sent to it by the server, and the modified selection criteria 14. The server 125 receives the ScreenNum 102 and the selection criteria 14. The server 125 executes the search operation as disclosed hereinabove using the revised selection criteria 14 and generates the feature screen status 127. The server 125 sends the feature screen status 127 that has been updated based on the modified selection criteria 14 to the client 126. The client 126 receives the feature screen status 127 and displays the updated feature screen 9. This process may iterate similar to the local version to further narrow the subfamily as desired.

The feature screen 9 in a preferred embodiment, permits the user to choose to view the representative picture 17 by selecting a view family picture pushbutton 211. When the user on the client 126 selects the view family picture pushbutton 211, the client 126 sends a request to the server 125 for the picture 17 as well as the feature screen code, ScreenNum 102.

The user accesses the property screen 12 by selecting the detail view pushbutton 207. An example of the property screen 12 format for the Internet embodiment is shown in FIG. 30. When the user on the client 126 selects the detail view pushbutton 207, the client 126 sends to the server 125 the feature screen code, ScreenNum 102, and the selection criteria 14. The server 125 returns the features 5, the alternatives 6, the properties 28, and the line art 29 for the item 3, or the first item in a larger subfamily 2, satisfying the selection criteria 14. To view the property screen 12 for the next item 3 listed in the subfamily 2, the user on the client 126 selects a next pushbutton 212. Selection of the next pushbutton 212 causes the client 126 to initiate a request to the server 125. The client 126 sends to the server 125 the feature screen code, the selection criteria 14, a request for property screen information, and an indication of which item of the subfamily 2 is of interest.

I claim:

1. A method for assisting a user in identifying a subfamily of items within a family of items, the method comprising:

- (a) providing a computer readable data file of stored information representing at least one family of items, said data file identifying at least one alternative for each item;
 - (b) reading said data file;
 - (c) displaying a plurality of pictures from said data file, wherein each of said plurality of pictures represent said at least one family of items or represent a cluster of said at least one family of items;
 - (d) accepting a selected picture of said plurality of pictures;
 - (e) determining if said selected picture represents said at least one family of items or said cluster of said at least one family of items;
 - (f) when said selected picture represents said at least one family of items, displaying a feature screen indicating said alternatives represented in said at least one family of items selected;
 - (g) accepting at least one selected alternative, said at least one selected alternative defining a selection criteria;
 - (h) determining the subfamily of items wherein each said item in the subfamily satisfies said selection criteria;
 - (i) determining available alternatives represented in the subfamily and unavailable alternatives unrepresented in the subfamily; and
 - (j) revising said feature screen to display said available alternatives as distinct from said unavailable alternatives.
2. The method according to claim 1 wherein when said determining step (e) determines that said selected picture represents said cluster of said at least one family of items: displaying a next plurality of pictures from said data file, wherein each of said next plurality of pictures represent said at least one family of items or represent a cluster of said at least one family of items; repeating steps (d) and (e) for said next plurality of pictures until said accepted selected picture represents said at least one family of items; and performing steps (f) through (j).
3. The method according to claim 1 wherein said displaying step (c) further comprises: displaying said plurality of pictures from said data file distributively on a plurality of display pages, wherein a portion of said plurality of pictures are displayed on each of said plurality of display pages; and accepting a selected one of said first plurality of display pages at a time for display.
4. The method according to claim 1 further comprising: accepting mouse over input on a one of said displayed said first plurality of pictures from said data file; when said mouse over input is on said one of said first plurality of pictures that represents said at least one family of items, displaying a picture subtitle of a name of the family; and when said mouse over input is on said one of said first plurality of pictures that represents said cluster of said at least one family of items, displaying a picture subtitle of a name of the cluster of families.
5. The method according to claim 1 further comprising: storing said selection criteria related to said at least one family of items; accepting a selected next at least one family of items; applying in a search said stored selection criteria related to said at least one family of items to said selected next at least one family of items.

21

6. A method for assisting a user in identifying a subfamily of items within a family of items, the method comprising:
- (a) providing a computer readable data file of stored information representing at least one family of items, said data file identifying at least one alternative for each item; 5
 - (b) reading said data file;
 - (c) displaying a main menu screen with a part number entry; 10
 - (d) accepting entry of a part number in said part number entry for a part;
 - (e) identifying a family of items of which said part is a member;
 - (f) displaying a feature screen for said family of items of which said part is a member, wherein said feature screen indicates selected alternatives associated with said part in said family of items; 15
 - (g) accepting a deselected alternative, wherein said deselected alternative defines a broader selection criteria;

22

- (h) determining a larger family of items wherein each item in said larger family of items satisfies said broader selection criteria; and
 - (i) revising said feature screen to display at least one more part, wherein said at least one more part is similar to said part and is a member of said larger family of items.
7. The method according to claim 6 wherein said revising step (i) further comprises:
- displaying on said feature screen a remaining selected alternatives associated with said larger family of items based on said broader selection criteria.
8. The method according to claim 6 further comprising:
- repeating steps (g) through (i) for a next deselected alternative, wherein said next deselected alternative defines a next broader selection criteria and a next larger family of items satisfying said next broader selection criteria, and said feature screen is revised to display at least one more additional part which is a member of said next larger family of items and is similar to said part.

* * * * *